

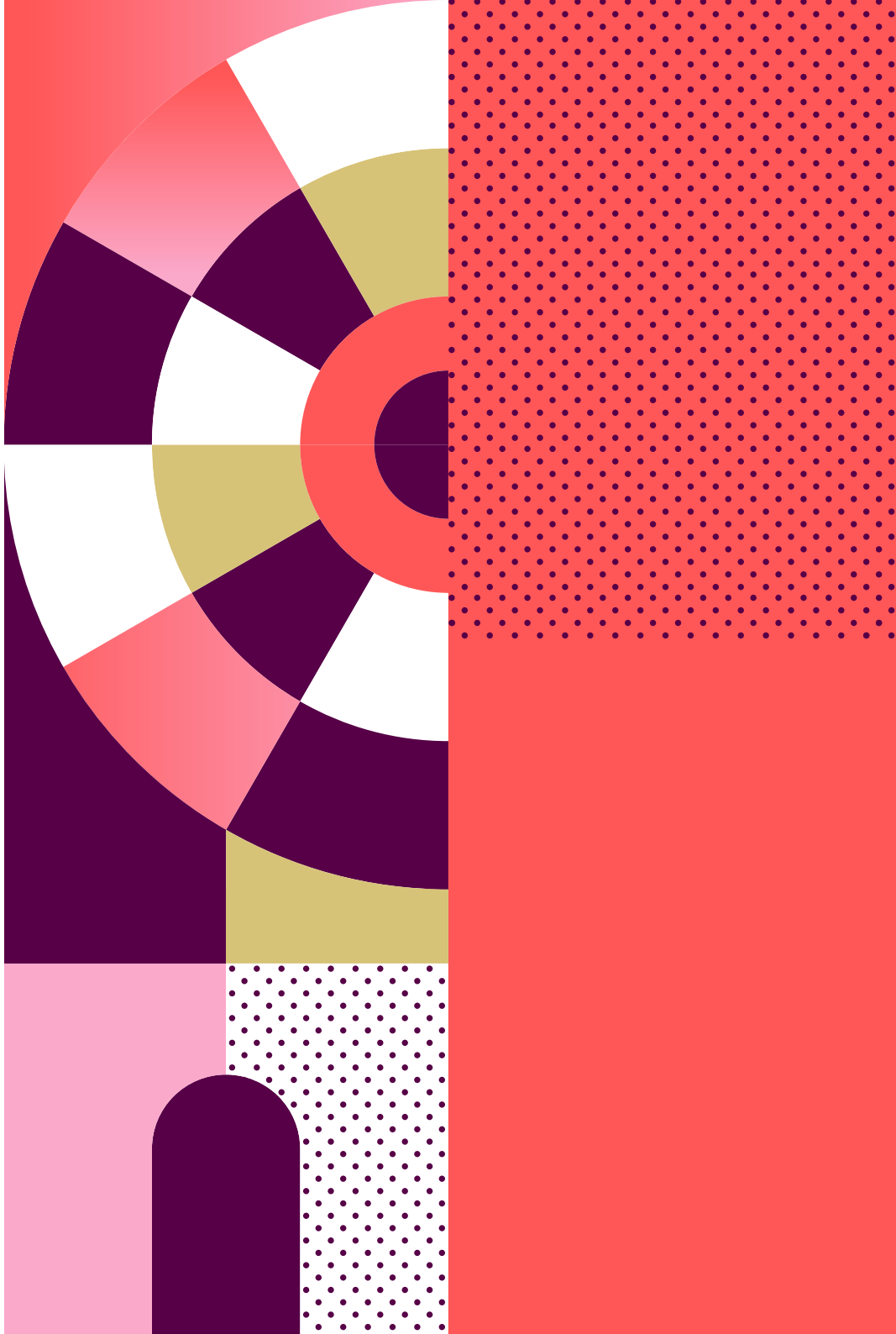


**TEAM LEADERS'
GUIDE**

**PARA
ARCHERY**

From Thursday 29 August
to Thursday 5 September 2024

EN GAMES WIDE O
WIDE OPEN GAME
OUVRONS GRAND
RAND LES JEUX OUV
EN GAMES WIDE O
WIDE OPEN GAME
OUVRONS GRAND
RAND LES JEUX OUV
EN GAMES WIDE O
WIDE OPEN GAME
OUVRONS GRAND
RAND LES JEUX OUV
EN GAMES WIDE O





ABOUT THIS GUIDE

Published in July 2024, the series of Team Leaders' Guides offers a summary of competition-related material about each sport at Paris 2024 and provides a variety of information aimed at helping teams in their planning and final preparation for the Games.

All information provided in this Team Leaders' Guide was correct at the time of publication, but some details may change prior to the Games so NPC representatives are urged to regularly check the IPC Exchange and myInfo, as well as Paris 2024 website and application, for the latest updates or contact your respective Paris 2024 sport managers.

This information has been developed and approved by the IPC, International Federations and Paris 2024 competition management and may be updated as required leading up to the Games. The Team Leaders' Guides are designed for internal operational use by Paris 2024 stakeholders and should not be publicly shared.

WELCOME



On behalf of the Paris 2024 Organising Committee for the Olympic and Paralympic Games, I am delighted to present the Team Leaders Guides for the Paris 2024 Paralympic Games.

In 2024, Paris and France will proudly host the Summer Paralympic Games for the first time in their history. A first time is a unique opportunity to put a mark in the history of the Games and to shine a light on the Paralympic athletes and the values they embody. The Paris 2024 Paralympic Games will also be an important step on the path to gender parity and will be the most gender-balanced Games so far.

At Paris 2024 we are proud to organise the first Games under the New Norm of the Olympic Agenda 2020, which focuses on economic, social and environmental efficiency and sets a precedent in the organisation of sports events. Paris 2024 aims to deliver responsible Games whether by using 95 percent of existing or temporary venues and 100 percent renewable energy during the Games, or by favouring a circular economy, sustainable food, and clean mobility, and by preserving the biodiversity on venues. By taking climate and environmental issues into account well before the event, we are breaking new ground in the history of the Games.

Paris 2024 will be a spectacular celebration, starting with the opening ceremony right in the heart of Paris for a breathtaking show between the Champs-Élysées and Place de la Concorde.



The paralympic athletes will have the chance to show their talent in some of the most iconic sites of the French heritage, from the foot of the Eiffel Tower (blind football) to the Champ-de-Mars (Para judo and wheelchair rugby), the Grand Palais (wheelchair fencing and Para taekwondo), Invalides (Para archery and arrival of the paralympic marathon), or the Château de Versailles (Para equestrian). The cultural wealth and diversity of the Paris region will be on display for the millions of spectators cheering on the athletes. With the road events in Seine-Saint-Denis, the heritage zone of the Games for Paris 2024, and in Paris, a great opportunity will be given to a maximum number of people to freely celebrate the Games and the athletes close to their home.

As athletes are the heart of Paris 2024 Paralympic Games, we are committed to offer them an exceptional experience with unique competition venues and a compact concept to limit transport and let athletes focus on the competition. Paris 2024 will leave a positive and lasting impact on the lives of residents by making long-anticipated investments, especially in Seine-Saint-Denis. All the facilities that will be used by athletes and delegations during the Games are designed with their legacy in mind so that they can be repurposed as public facilities, housing and offices based on local needs.

At Paris 2024, we are proud to celebrate Paralympic athletes and to harness the power of the Games to change public attitudes towards disabilities and help build a more inclusive society that will go on long after the Paralympic Games.

We hope that this guide, produced in collaboration with IPC Sport and International Federations, will provide you with the information you need to prepare for your Games.

We are looking forward to welcoming you to the City of Lights in the summer of 2024 for what we hope will be revolutionary Games.

Aurélie Merle
Executive Sport Director

CONTENTS

1

PARA ARCHERY OVERVIEW	1
PARA ARCHERY COMPETITION	2
MEDAL EVENTS	2
KEY DATES	3
COMPETITION MANAGEMENT	4
INTERNATIONAL TECHNICAL OFFICIALS (ITOS)	5
NATIONAL TECHNICAL OFFICIALS (NTOS)	6
RULES	6
SCORING	6
APPEALS PROCEDURE	8
LATE ATHLETE REPLACEMENT (LAR)	8
INDIVIDUAL AND TEAM EVENTS	8
CLOTHING AND EQUIPMENT	9
TRANSPORT AND STORAGE OF PARA ARCHERY EQUIPMENT	11

2

COMPETITION	13
COMPETITION SCHEDULE	14
COMPETITION FORMAT	18
PRE-COMPETITION PROCEDURES	20
ATHLETES HEADSHOTS	20
FINAL FIELD OF PLAY FAMILIARISATION	20
OFFICIAL PRACTICE AND ATHLETES' EQUIPMENT INSPECTION	21
TEAM MANAGERS' MEETING	21
TRANSPORT TO OPENING CEREMONY	21
COMPETITION PROCEDURES	22
ENTRY TO THE FIELD OF PLAY DURING THE RANKING ROUND	22
MARKING OF ARROW HOLES DURING THE RANKING ROUND	22
MIXED TEAM MEMBER NOMINATION	22

WARM-UP PROCEDURES	23
CALL TO COMPETITION	23
ATHLETES' AGENTS	24
SAME DISCIPLINE ATHLETES (SDA)	24
POST-COMPETITION PROCEDURES	24
LEAVING THE FIELD OF PLAY	24
MIXED ZONE	25

3

COMPETITION VENUE	27
INVALIDES (INV)	28
VENUE MAP	28
VENUE ACCESS	28
TRANSPORT ACCESS TO THE VENUE	29
VENUE FACILITIES AND SERVICES	29
VENUE ACCREDITATION OFFICE (VAHO)	32

4

TRAINING	35
TRAINING VENUE	36
TRAINING SESSIONS	36
TRAINING REGULATIONS	36
TRAINING INSTALLATIONS	37
TRAINING VENUES LEVEL OF SERVICE	37
OTHER FACILITIES AND SERVICES AVAILABLE	37

5

GENERAL INFORMATION	39
THE PARALYMPIC GAMES: ESSENTIALS	40
PARIS AND FRANCE IN 2024	40
THE 2024 PARALYMPIC GAMES IN BRIEF	41
ACCREDITATION	42
PARALYMPIC IDENTITY AND ACCREDITATION CARD (PIAC)	42
ACCREDITATION CATEGORIES AND PRIVILEGES	43
ACCREDITATION VALIDATION COUNTERS	46
LOST, STOLEN, DAMAGED ACCREDITATION CARDS	47
ACCESS TO TRAINING VENUES	
“P” ACCREDITATION	47
SUPPLEMENTARY ACCESS CONTROL DEVICES (SACDS)	48
ANTI-DOPING	48
ANTI-DOPING PROGRAMME	48
GAMES TIME OPERATIONS	48
ARRIVALS AND DEPARTURES	49
PRIMARY PORTS OF ENTRY (PPOE)	49
SECONDARY PORTS OF ENTRY (SPOE)	50
ARRIVALS & DEPARTURES SERVICE POINTS (AND SP)	50
ACTIVATION PERIOD	50
ARRIVALS & DEPARTURES SERVICE	51
BAGGAGE AND ATHLETES’ OVERSIZED SPORT EQUIPMENT	53
CEREMONIES	54
OPENING CEREMONY	54
CLOSING CEREMONY	59
VICTORY CEREMONIES	59
ENVIRONMENTAL RESPONSIBILITY	61
RECOMMENDATIONS	62
MEDICAL SERVICES	62
PARALYMPIC VILLAGE POLYCLINIC	62
MEDICAL SERVICES AT THE PARALYMPIC VILLAGE AND OFFICIAL COMPETITION AND TRAINING VENUES	63
MEDICAL SERVICES AT SATELLITE OLYMPIC VILLAGES	64
NPC DOCTORS	64
DESIGNATED GAMES HOSPITALS	65
PARALYMPIC VILLAGES AND ACCOMMODATION	66

PARALYMPIC VILLAGES DATES OF OPERATION	66
SPORT INFORMATION CENTRE	67
MYINFO	68
TECHNICAL FILMING AT VENUES	69
TECHNOLOGY	70
TICKETING AND ACCREDITED SEATING	70
GAMES-TIME TICKET SALES	70
COMPLIMENTARY SPORT TICKETS	70
TRANSPORT	72
TA TRAINING AND COMPETITION SERVICES	72
PARALYMPIC ROUTE NETWORK (PRN)	74
TRAVEL TO THE CO-HOST CITY OF CHÂTEAUXROUX	74
PUBLIC TRANSPORT	75
VILLAGE MOBILITY	76
TRANSPORT DESK	77
TRANSPORT APP	77
ATHLETES' BAGGAGE AND OVERSIZED SPORT EQUIPMENT	78
SECURITY	79
SECURITY AT VENUES	79
SECURITY OF TRANSFER AND TRANSPORT OPERATIONS	80
PROHIBITED OR RESTRICTED ITEMS POLICY	81
EMERGENCY SERVICES	84
WHEELCHAIR, ORTHOTIC AND PROSTHETIC REPAIR SERVICES	85

6

APPENDICES	87
VENUE MAP	88
PARALYMPIC VILLAGE	89
COMPETITION SCHEDULE	90
PARALYMPIC COMPETITION VENUES	92
PARALYMPIC TRAINING VENUES	93



PARIS 2024



1

***PARA ARCHERY
OVERVIEW***

PARA ARCHERY COMPETITION

The Para archery competition at the Paris 2024 Paralympic Games will be held from Thursday 29 August to Thursday 5 September at the Invalides venue in Paris. This competition will consist of the following nine (9) events:

MEDAL EVENTS

Total number of medal events: 9

MEN (3)

- Individual W1
- Individual Compound Open
- Individual Recurve Open

WOMEN (3)

- Individual W1
- Individual Compound Open
- Individual Recurve Open

MIXED TEAM (3)

- W1
- Compound Open
- Recurve Open

A total of 138 athletes, 75 men and 63 women, may take part in the Para archery competition. For qualification system details, see the [IPC website](#).





KEY DATES

1 July 2024	Opening of the Sport Entries system (SEQ)
5 August 2024	Closing of the Sport Entries system (23:59 Central European Summer Time)
21 August 2024	Opening of the Paralympic Village
22 August 2024	Start of Para archery training
25 August 2024	Familiarisation
26 August 2024	Familiarisation Draw to allocate targets in the Ranking Round
27 August 2024	Official Practice Team Managers' Meeting
28 August 2024	Opening Ceremony
29 August 2024	Start of Para archery competition, Ranking Round
5 September 2024	End of Para archery training and competition
8 September 2024	Closing Ceremony
10 September 2024	Closing of the Paralympic Village

COMPETITION MANAGEMENT

WORLD ARCHERY (WA)

- **International Federation Delegate:** Yuko Okura
- **International Federation Deputy Delegate:** Thomas Aubert

PARIS 2024 COMPETITION MANAGEMENT

- **Para Archery Sport Manager:** Sébastien Flute
- **Para Archery Services Coordinator:** Nora Nassih
- **Para Archery Technical Operations Manager:** Paul Lamy
- **International Federation & Technical Officials Coordinator:**
Hilda Gibson
- **Para Archery Administration & Workforce Coordinator:**
Alice Amadiou
- **Para Archery Athletes Services Coordinator:** Clarisse Costaz
- **Para Archery Sport Information Coordinator:** Alice Delecroix
- **Para Archery Field of Play Coordinator:** Jérôme Bidault
- **Para Archery Sport Equipment Coordinator:** Xavier Veray





INTERNATIONAL TECHNICAL OFFICIALS (ITOS)

Judge	ARAUJO César	MEX
Chair of Jury of Appeal	BRITTON Pippa	GBR
Deputy Chairperson	CATALAN David	ESP
Judge	HAGAMAN Alison	AUS
Judge	HUSEIN Nabil	BRA
Judge	KOURA Ahmed	EGY
Judge	KRATZMÜLLER Bettina	AUT
Chairperson of Judge Commission	LIPSCOMB Katy	GBR
Jury of Appeal Member	LITTKÉ Nancy	CAN
Judge	PAN Karen	TPE
Judge	PEREZ Liz	MEX
Director of Shooting	POTTS Robert	GBR
Judge	RASOULI Ghazaleh	IRI
Jury of Appeal Member	ROGERS MJ	USA
Judge	SHALABY Maya	SLO
Judge	STRANDBY Bjarne	DEN

NATIONAL TECHNICAL OFFICIALS (NTOS)

Judge	AUBEL Marion	FRA
	AUGUSTYN Leslie	FRA
	DEBRENNE Alexandre	FRA
	HILLAIRET Anthony	FRA
	MAILLART Nathalie	FRA
	MATHIS Christian	FRA
	PAQUET Denis	FRA
	PLESSIET Marie Josephe	FRA
	VERROUST Sébastien	FRA

RULES

The Para archery competition will be held in accordance with the editions of the following documents that are in force at the time of the Games:

- **World Archery Constitution and Rules** available on the website <https://www.worldarchery.sport/rulebook>
- **IPC Handbook** available on the website <https://www.paralympic.org/ipc-handbook>

In accordance with the “Paralympic Games” chapter of the IPC Handbook, World Archery will be responsible for the technical control and direction of the Para archery competition at the Paris 2024 Paralympic Games.

SCORING

After the Ranking Round, in which archers will each shoot seventy-two (72) arrows to determine the seedings, the individual events will use the set-scoring system or cumulative scoring system.

All individual Recurve Open matches (70m/122cm target face) will use the sets scoring system over the best of five (5) sets, with three (3) arrows per set. The winner



of each set will be awarded two (2) points and the loser zero (0) points. If the scores are tied at the end of a set, each archer will receive one (1) point.

If the match is tied at 5-5 after the fifth (5th) set, archers will each shoot a single shoot-off arrow, and the archer whose arrow is closest to the center will win the match. In the event of a tie, a second tiebreak shoot-off arrow will be shot and so on until the tie is broken.

The elimination rounds of the Mixed Team Recurve Open events will use a similar system. All team matches will be the best of four (4) sets maximum and each archer will shoot two (2) arrows per set. The team winner of each set will be awarded two (2) points and the loser zero (0) points. If the scores are tied at the end of a set, each team will receive one (1) point. The first team to score five (5) points wins the match.

If the match is tied after the fourth (4) sets, each archer will shoot a single shoot-off arrow. The team with the most points at the end of the shoot-off wins the match. In the event of a tie, the match will be won by the team with the closest arrow to the center. If the tie remains, the second (2nd) arrow (per team) will be used as tiebreaker.

For the Individual Compound Open and W1 matches (50m/80cm target face), athletes will shoot a match using the cumulative scoring system, five (5) ends of three (3) arrows each. The athlete with the highest score will win the match.

If the match is tied after the fifteen (15) arrows, the athletes will shoot a single shoot-off arrow. The athlete with the arrow closest to the center will win the match.

For Mixed Team Compound Open and Mixed Team W1 matches, teams shoot four (4) ends of four (4) arrows using the cumulative scoring system. Each team member shoots two (2) arrows per end. The team with the highest score will win the match.

In case there is a tie, each team will shoot two (2) arrows, one (1) per athlete. The team with the most points after the shoot-off wins the match. In the event of a tie, the match will be won by the team with the closest arrow to the center. If the tie remains, the second (2nd) arrow (per team) will be used as tiebreaker.

After the semifinals, the losers will compete for the bronze medal. The winner of the match will finish third (3rd) and win the bronze medal. The winners of the two (2) semifinals will compete head-to-head for the gold medal. The winner of the match will win the competition and be awarded the gold medal by virtue of their first place while the loser will finish in second (2nd) place and be awarded the silver medal.

APPEALS PROCEDURE

In the event of an intent to appeal or an actual appeal, NPCs must adhere to the times indicated on the Appeal form (available at Ranking Round DOS hut, Final Field of Play call room and Judges' scoring hut).

The intention to file an appeal must be lodged in writing with the Chairperson or Deputy Chairperson of the Tournament Judges Commission within five minutes of the end of the match or the Ranking Round.

A fee of CHF 50 or USD 50 or EUR 50 must be paid to Chairperson of the Tournament Judges Commission in order for the appeal to be valid. If the appeal is upheld by the Jury of Appeal, the fee will be returned. If the appeal is rejected, the fee will not be returned unless the Jury decides otherwise.

LATE ATHLETE REPLACEMENT (LAR)

INDIVIDUAL AND TEAM EVENTS

An NPC may replace an athlete between the close of entries (5 August 2024) and their Final Delegation Registration Meeting (F-DRM) only if the replacement is in the same sport, medal event(s) and sport class. Replacing athletes must have met all qualification and eligibility criteria for the respective event(s) and must have signed the Conditions of Participation Agreement. The NPC must have submitted an Accreditation Application for the replacing athlete by the deadline of 3 May 2024 (long list). Athletes may be considered as replacements only if they have been internationally classified with a sport class status of either "Confirmed" or "Review" with a review date after 31 December 2024.

Replacements may only be made for athletes who withdraw due to injury, illness, or other special circumstances. All replacements are subject to review and approval by the IPC. Absolutely no replacements will be permitted after the DRM.



CLOTHING AND EQUIPMENT

Clothing and equipment used by archers and other participants in the Para archery competition must comply with the following documents:

- **World Archery Constitution and Rules** available on the website <https://www.worldarchery.sport/rulebook>.
 - Book 1: Constitution and Procedures
 - Book 2: Events
 - Book 3: Target Archery
- **IPC Practical Guidelines** (available on the website <https://www.paralympic.org/paris-2024/guides-and-policies>).
- **The IPC Handbook:** www.paralympic.org/the-ipc/handbook
- **The IPC Manufacturer Identification Guidelines for the Paris 2024 Paralympic Games:** https://www.paralympic.org/sites/default/files/2024-05/2024_04%20IPC%20Paris%202024%20Uniform%20Guidelines.pdf

The IPC Manufacturer Identification Guidelines have been distributed to all National Paralympic Committees (NPCs) and International Federations (IFs) to encourage all parties to make use of this reference manual during the design and production of clothing, equipment, accessories and footwear items for the Paris 2024 Paralympic Games.

→ ATHLETE NUMBERS

The target distribution list for the ranking rounds will be determined by drawing lots. Athletes' numbers for the ranking rounds will be distributed on the day at the field. Only athletes taking part in the current session will be authorised to go to the field for the ranking round.

Athlete numbers for the individual elimination and final rounds will be distributed to teams after completion of the Ranking Round at the venue Sport Information Desk (SID) in the Athletes' Lounge. These numbers will be allocated according to the athlete's ranking at the end of the Ranking Rounds. Athletes must ensure they always wear the correct athlete number.

When on the shooting line, the athlete number must always be clearly visible. Athlete numbers must be worn on each archer's quiver or able to be seen facing the waiting line.

→ BOWS AND SPOTTING SCOPES

An athlete may take only two (2) bows plus the accessories listed in the World Archery Rules (Book 3, Article 11.1) onto the Final Field of Play. The accompanying team official may take only one (1) belt pack to carry the athlete's accessories. A spotting scope for each coach will be provided in the coaches' area. No spotting scopes will be allowed on the Final Field of Play shooting line. Two (2) big screens on the field behind each stand will display each target while athletes shoot, allowing them to clearly see the position of their arrows in the target.

Scopes on the shooting line will be allowed in the Ranking Round. The height of the scope is determined by the highest point of the scope, not by the height of the lens. The maximum height is the lowest part of the athlete's armpit. If there are any problems, judges will approach and instruct the team official to adjust the height of the offending scopes.

In case of inclement weather, necessary protection, in addition to clothing, may be used according to approval by the IF Technical Delegate (or, in their absence, the Chairperson of the Tournament Judge Commission) of the event.

→ DRESS REGULATIONS

Athletes and team officials should wear their national team uniforms (with the same look per division, in accordance with World Archery rules) and sport shoes during training and competition. This is applicable to all accredited areas including the Field of Play, the training field, the Athletes' Lounge, and other facilities at the venue. Competition management would like to remind all NPCs that it is mandatory for all athletes participating in the tournament to clearly display their names and NPC codes on the back of their clothing.

Athletes competing in the semifinal matches are requested to bring their NPC ceremonial uniforms with them to the call room in preparation for the victory ceremonies. The bronze and gold medal matches will take place immediately after the semifinals, and athletes will not have the opportunity to go back to the practice field to pick up their uniforms. After the medal matches, medallists will be escorted back to the call room to change into their uniforms and prepare for the victory ceremony.

Further information can be found at the following links:

- **IPC Handbook:** <https://www.paralympic.org/ipc-handbook>
- **The IPC Manufacturer Identification Guidelines for the Paris 2024 Paralympic Games:** <https://www.paralympic.org/paris-2024/guides-and-policies>





TRANSPORT AND STORAGE OF PARA ARCHERY EQUIPMENT

Prior to each flight for outbound and inbound travel to and from the Games, teams are advised to inform the airline they are travelling with that they are transporting Para archery equipment. Equipment must be packed and placed in protective hard- or soft-sided locked bow cases before a flight and must always be checked as hold baggage.

If archers and their equipment are transported in separate vehicles between the airport, the Paralympic Village, the Para archery competition venue and other venues, the team may appoint a representative to accompany their equipment and ensure its integrity is maintained.

Paris 2024 will provide a truck to transport the athletes' sports equipment, which will follow the athletes' bus on the first two (2) journeys between the Paralympic Village and the competition venue on the first day of training.

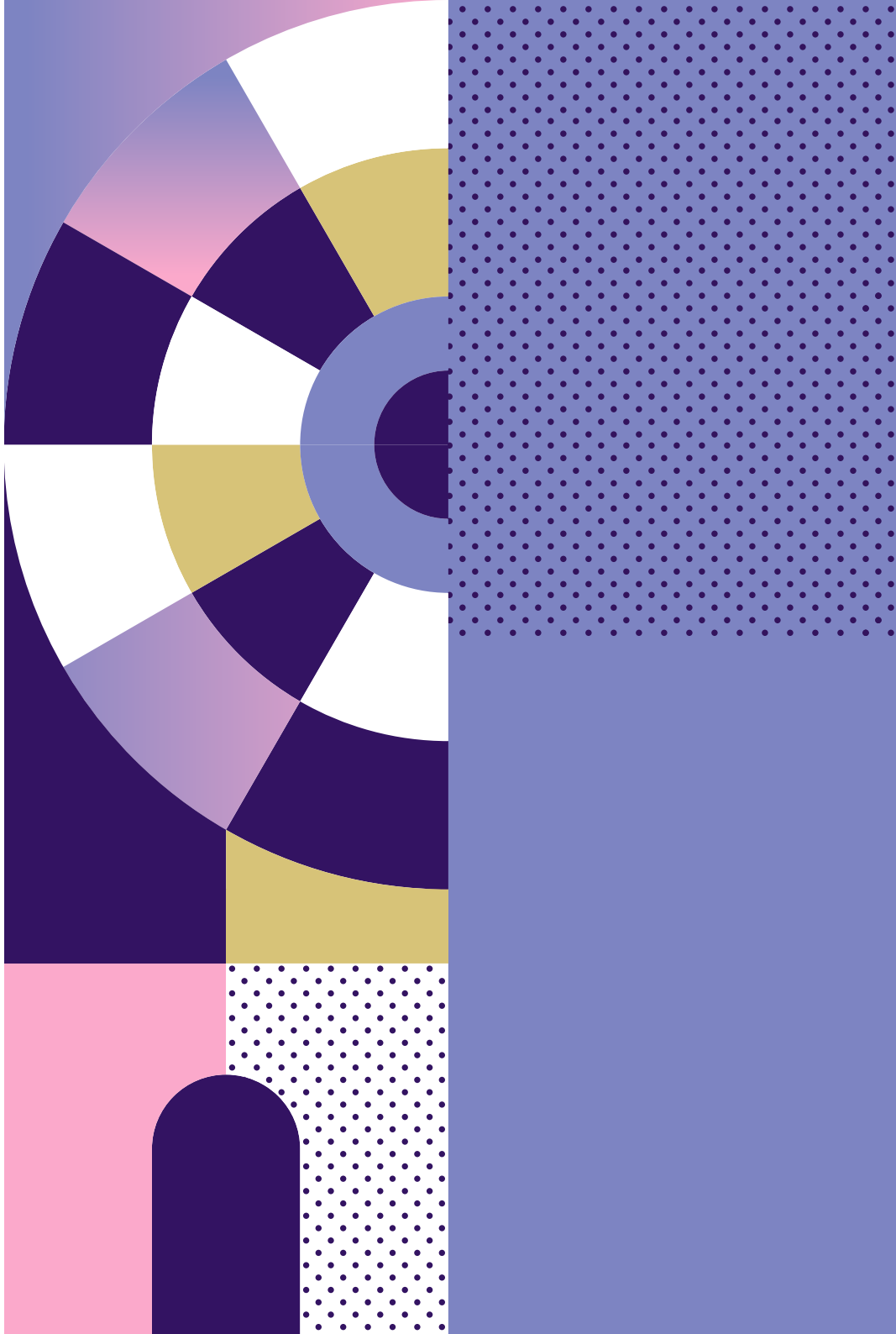
The Para archery competition venue will have secure storage spaces where athletes can store their equipment after training or competition.

Before storage, recurve and compound bows must be disassembled and locked in protective hard- or soft-sided cases. Bows must be de-strung, and the bow limbs must be removed.

The secure storage facilities at the venue will close at the end of the Para archery competition on 5 September 2024, by which point all equipment must be collected.

In the Paralympic Village, as well as during the journey to and from the Para archery venue, archers must keep their equipment in hard- or soft-sided cases, locked cases, except when working on the equipment in their rooms. Archers are not permitted to shoot arrows anywhere in the Paralympic Village.

Archers and other parties who violate any of these rules may have their Paralympic accreditation withdrawn immediately. If they violate these rules after the competition has ended, they may also be subjected to sanctions from World Archery which may include exclusion from future events.



1 2 3

COMPETITION

COMPETITION SCHEDULE

SESSION	TIME	DURATION	EVENT
Thursday 29 August 2024 — Invalides			
ARC01	09:00 – 11:30	02:30	Women's Individual W1 Ranking Round Men's Individual W1 Ranking Round
ARC02	13:00 – 15:30	02:30	Women's Individual Compound Open Ranking Round Men's Individual Recurve Open Ranking Round
ARC03	17:00 – 19:30	02:30	Men's Individual Compound Open Ranking Round Women's Individual Recurve Open Ranking Round
Friday 30 August 2024 — Invalides			
ARC04	09:00 – 12:25	03:25	Women's Individual Compound Open 1/16 Elimination Round
ARC05	15:30 – 20:05	04:35	Men's Individual Compound Open 1/16 Elimination Round
Saturday 31 August — Invalides			
ARC06	09:00 – 12:45	03:45	Women's Individual W1 1/8 Elimination Round Women's Individual W1 Quarterfinals Women's Individual W1 Semifinals Women's Individual W1 Bronze Medal Match Women's Individual W1 Gold Medal Match Women's Individual W1 Victory Ceremony





SESSION	TIME	DURATION	EVENT
ARC07	15:30 – 20:40	05:10	Women's Individual Compound Open 1/8 Elimination Round Women's Individual Compound Open Quarterfinals Women's Individual Compound Open Semifinals Women's Individual Compound Open Bronze Medal Match Women's Individual Compound Open Gold Medal Match Women's Individual Compound Open Victory Ceremony
Sunday 1 September 2024 – Invalides			
ARC08	09:00 – 13:20	04:20	Men's Individual W1 1/8 Elimination Round Men's Individual W1 Quarterfinals Men's Individual W1 Semifinals Men's Individual W1 Bronze Medal Match Men's Individual W1 Gold Medal Match Men's Individual W1 Victory Ceremony
ARC09	15:30 – 20:40	05:10	Men's Individual Compound Open 1/8 Elimination Round Men's Individual Compound Open Quarterfinals Men's Individual Compound Open Semifinals Men's Individual Compound Open Bronze Medal Match Men's Individual Compound Open Gold Medal Match Men's Individual Compound Open Victory Ceremony

SESSION	TIME	DURATION	EVENT
Monday 2 September 2024 — Invalides			
ARC10	09:00 – 11:55	02:55	Mixed Team W1 1/8 Elimination Round Mixed Team W1 Quarterfinals Mixed Team W1 Semifinals Mixed Team W1 Bronze Medal Match Mixed Team W1 Gold Medal Match Mixed Team W1 Victory Ceremony
ARC11	15:30 – 20:05	04:35	Mixed Team Compound Open 1/8 Elimination Round Mixed Team Compound Open Quarterfinals Mixed Team Compound Open Semifinals Mixed Team Compound Open Bronze Medal Match Mixed Team Compound Open Gold Medal Match Mixed Team Compound Open Victory Ceremony
Tuesday 3 September 2024 — Invalides			
ARC12	09:00 – 13:35	04:35	Women's Individual Recurve Open 1/16 Elimination Round Women's Individual Recurve Open 1/8 Elimination Round
ARC13	17:00 – 19:55	02:55	Women's Individual Recurve Open Quarterfinals Women's Individual Recurve Open Semifinals Women's Individual Recurve Open Bronze Medal Match Women's Individual Recurve Open Gold Medal Match Women's Individual Recurve Open Victory Ceremony





SESSION	TIME	DURATION	EVENT
Wednesday 4 September 2024 — Invalides			
ARC14	09:00 – 15:45	06:45	Men's Individual Recurve Open 1/16 Elimination Round Men's Individual Recurve Open 1/8 Elimination Round
ARC15	17:30 – 20:25	02:55	Men's Individual Recurve Open Quarterfinals Men's Individual Recurve Open Semifinals Men's Individual Recurve Open Bronze Medal Match Men's Individual Recurve Open Gold Medal Match Men's Individual Recurve Open Victory Ceremony
Thursday 5 September 2024 — Invalides			
ARC16	10:00 – 12:20	02:20	Mixed Team Recurve Open 1/8 Elimination Round
ARC17	15:00 – 18:15	03:15	Mixed Team Recurve Open Quarterfinals Mixed Team Recurve Open Semifinals Mixed Team Recurve Open Bronze Medal Match Mixed Team Recurve Open Gold Medal Match Mixed Team Recurve Open Victory Ceremony

COMPETITION FORMAT

The Para archery competition will begin with the women's and men's Ranking Rounds, which will determine the seedings for the individual and mixed team events. After the Ranking Rounds, all nine (9) medal events will be conducted in a single-elimination format, with individual archers and mixed teams competing in a series of head-to-head matches. The losers of the two (2) semifinals shall play each other for the bronze medal.

A summary of the competition format is given above. For the detailed table, see "Competition schedule" above.

Thursday 29 August 2024

The six (6) Ranking Rounds, one (1) for each Individual event, shall be held on Thursday 29 August.

Targets will be set at 70 meters (122 cm-diameter target face and 10 zones from 10 to 1 point) for Recurve Open categories; 50 meters for W1 categories (80 cm-diameter target face and 10 zones from 10 to 1 point) and Compound Open categories (80 cm-diameter target face and 6 zones from 10 to 5 points).

In the Ranking Rounds, each archer will shoot 72 arrows. The archer with the highest score in his or her Individual event will be awarded the number one (1) seeding, the archer with the second highest score will be awarded the number two (2) seeding, and so on, until all archers have been seeded from first to last. In the event of any ties, the number of 10s and Xs will be used as tiebreakers.

The Ranking Round scores will also be used to determine the seedings for the Mixed Team events. The individual scores of the top two (2) archers (one [1] woman and one [1] man) for each nation will be combined to give a total team score. It is possible to change archers for the mixed competition, but the score remains the same. This score will be ranked against the scores of the other teams.

Following the Ranking Round, if two or more mixed teams are tied on points, the ties for participation in the mixed-team dual elimination rounds must be broken by shoot-off (the system of numbers of 10 and X is not used for the tie-break).



A shoot-off of two (2) arrows per team (one [1] arrow per team member) will be used to break the tie. If the score is tied, the team with the arrow closest to the center of the target face will be declared the winner. If the score is still tied, the second arrow closest to the center will decide the winner. A second shoot-off may take place if necessary to break the tie.

Friday 30 August 2024

The women's and men's Individual Compound Open events will begin on Friday 30 August. The 1/16 Elimination Round for each event will take place on Friday 30 August in the morning for women and in the afternoon for men.

Saturday 31 August and Sunday 1 September 2024

The Women's Individual W1 event and the last Women's Individual Compound Open matches will take place on Saturday 31 August respectively in the morning and afternoon sessions. The events will begin for each session with the early elimination rounds (1/8) for the Women's Individual W1 event, and from the 1/8 round for the Women's Individual Compound Open event up to the final and the Victory Ceremony. The Men's Individual W1 and Men's Individual Compound Open events will be held on Sunday 1 September in the same format.

Monday 2 September 2024

The Mixed Team W1 and Mixed Team Compound Open events will take place on Monday 2 September respectively in the morning and afternoon sessions. The events will begin for each session with the early elimination rounds (1/8) up to the final and victory ceremony.

Tuesday 3 September and Wednesday 4 September 2024

The Women's Individual Recurve Open event will be held on Tuesday 3 September and will be completed in a single day. The event will begin in the morning with the early elimination (rounds 1/16 & 1/8) and will continue in the afternoon from the quarterfinals to the final and victory ceremony. The Men's Individual Recurve Open event will be held on Wednesday 4 September in the same format.

Thursday 5 September 2024

The Mixed Team Recurve Open event will be held on Thursday 5 September and will be completed in a single day. The event will begin in the morning with the early elimination rounds (1/8) and will continue in the afternoon from the quarterfinals to the final and victory ceremony.

PRE-COMPETITION PROCEDURES

ATHLETES HEADSHOTS

Each athlete/team is required to attend the official headshot photoshoot, for Sport Presentation and Broadcast purposes.

DATE	TIME	LOCATION
24th – 25th August 2024	08:00 – 20:00	Village, Bastille Services Center, Studio
26th – 27th August 2024	08:00 – 22:00	

The draw will assign Ranking Round shooting positions and target numbers to athletes. The draw will be carried out by a member of the Paris 2024 results team. It will be witnessed by the IF Technical Delegates and the Paris 2024 Para archery Sport Manager.

FINAL FIELD OF PLAY FAMILIARISATION

Athletes will have the opportunity to train on the Final Field of Play for the elimination rounds on the 25 August and 26 August 2024. Familiarisation consists of two (2) sessions per day, one (1) in the morning and one in the afternoon (1). Each athlete will be grouped with the other competitors following the competition program, and will have 30 minutes to shoot on the Final Field of Play. These sessions will be the only opportunity to train on the Final Field of Play before the start of the competition. The familiarisation schedule with details of which sessions have been assigned to each NPC will be available at the venue Sport Information Desk (SID).

25 AUGUST 2024	
W1 Women & Men and Compound Open Women	09:00 – 13:00
Recurve Open Men & Women	16:30 – 20:30
26 AUGUST 2024	
Recurve Open Men & Women	09:00 – 13:00
Compound Open Men & Women	16:30 – 20:30



OFFICIAL PRACTICE AND ATHLETES' EQUIPMENT INSPECTION

Official practice will take place on Tuesday 27 August 2024 at the Training and Ranking Round Field of Play. The schedule will follow the same schedule to be used for the Ranking Rounds on 29 August 2024; women's and men's W1 athletes will shoot in the morning between 09:00 and 11:30; women's Compound Open and men's Recurve Open will shoot in the afternoon between 13:00 and 15:30; and men's Compound Open and women's Recurve Open will shoot in the evening between 17:00 and 19:30.

During Official Practice, athletes should confirm the target numbers they are going to shoot at the Ranking Round and practice at those targets.

Athletes' equipment and uniforms' inspection will take place on the same day, same time slot at the Athletes' Equipment Inspection area, located on the east side of the Ranking Round Field.

During inspection, each country will be called in alphabetical order to report to the Inspection area. All athletes must have their equipment inspected at the times specified in the official practice schedule. Data entry practice on a Personal Digital Assistant (PDA) will take place in conjunction with the equipment inspection.

TEAM MANAGERS' MEETING

DATE	TIME	LOCATION
27 August 2024	09:00 – 10:00	Venue Media Centre, Invalides

World Archery Secretary General, the IF Technical Delegates, the Chairperson of the Tournament Judge Commission, Technical Officials and the Paris 2024 Para Archery Sport Manager will be present at the meeting. Team Managers are asked to attend the meeting with this guide.

TRANSPORT TO OPENING CEREMONY

Following the training on 28 August 2024 from 09:00 to 12:00, athletes will return to the Paralympic Village to prepare for the Opening Ceremony. Athletes are advised to return to the Paralympic Village after finishing their practice session to be ready, in time, to board the transport that will take them and their delegation to the Opening Ceremony.

COMPETITION PROCEDURES

ENTRY TO THE FIELD OF PLAY DURING THE RANKING ROUND

During the Ranking Round on 29 August 2024, the number of accompanying persons who can enter the Field of Play will be restricted to one (1) person per athlete during the Ranking Round concerned, whether that is a coach or team official. There will be access checkpoints at the entrance to the Field of Play to verify the number of athletes and coaches.

Identification ribbons will be distributed to coaches during Official Practice day, in the Sport Information Desk (SID).

For example, if there are three (3) athletes competing, only three (3) people can accompany them onto the Field of Play. These three (3) people do not necessarily have to remain the same person; they can switch with other officials in their team each time they enter the field.

W1 assistant will receive a back number to be allowed to go to the Field of Play with the athlete.

If needed, a volunteer could act as agent for scoring for athletes during the Ranking Round. The request should be made at the Sport Information Desk, in the athlete lounge.

MARKING OF ARROW HOLES DURING THE RANKING ROUND

During the practice prior to the Ranking Round and during the Ranking Round, athletes and agents are requested to mark their arrow holes as target faces will not be changed throughout the session unless in extreme circumstances.

MIXED TEAM MEMBER NOMINATION

The results of the two (2) highest scoring athletes from the same NPC will automatically be registered to the Mixed Team event. If teams wish to change the athletes of the mixed team, they should fill in the Mixed Team Member Nomination Form to name the athletes that will be competing in the Mixed Team event. The Mixed Team Member Nomination Form will be available at the Sport Information Desk (SID).



The form should be given to the Sport Information Desk (SID) up to 15 minutes before the start of the elimination matches for the Mixed Teams in each category, so the 2 September until 08:15 for W1 category, the 2 September until 15:15 for Compound Open category, and the 5 September until 09:45 for Recurve Open category.

WARM-UP PROCEDURES

RANKING ROUND DAY

At the beginning of the Ranking Round session, archers will be able to warm up for 15 minutes at their allocated target.

The 5m practice field opens 1 hour before the start of the Ranking Round session.

OTHER COMPETITION DAYS

The warm-up area, which comprises of six (6) targets on the west side of the Ranking Round Field of Play, will be available to athletes before they are called to compete in the final rounds. Each athlete or team will have access to this warm-up area one (1) hour before the start of their match.

The 5m practice field opens at the same time as the warm-up area.

CALL TO COMPETITION

Athletes and team officials should arrive at the call room, located at the west side of the Field of Play, 15 minutes before the scheduled start time of their match. Athletes, coaches and agents will be collected from the warm-up area (Ranking Round Field) by a marshal and guided to the call room. Athletes' accreditation cards and belongings will be collected by the marshal in the call room. These will be returned to them at the exit of the Field of Play when the match is over.

The Paris 2024 Field of Play coordinator will check the respect of IPC Manufacturer Identification Guidelines before entry to the Field of Play.

Approximately three (3) minutes before the programmed start time of their match, athletes and team officials will be moved to the athletes' entrance. When a signal is given by the floor manager at the finals field entrance, the line judge and coaches will enter the Field of Play first. Athletes then will be signaled to enter and proceed to the Field of Play and be ready for athlete introduction at their designated target positions.

Athletes should be aware that there will be athlete introductions. Athletes are asked to face first the camera in front of them and then look to the right and left to greet spectators when they are being presented.

Only one (1) accredited team official (except for the assistant for W1 athletes) will be allowed on the Field of Play as a coach with each athlete/mixed team competing in the events. Coaches must stand within the designated coaches' area throughout the match. A spotting scope for each coach will be provided in the coaches' area.

If needed, a volunteer could act as assistant to load the arrows for W1 athletes during the Ranking Round and the matches. The request should be made at the Sport Information Desk, in the athlete lounge. The team should provide uniform in order to conform with World Archery Book 3, appendix 2, rule 10.2.

ATHLETES' AGENTS

When athletes collect their arrows after the end of the warm-up, athletes' agents must assemble in the call area of the warm-up zone; a marshal will lead them to the Judge's Scoring Hut at the Final Field of Play.

After each match, athlete's agents will be escorted from the Field of Play (except for those agents with consecutive matches) and will exit by the same route they entered. Athletes' agents must follow the marshal's instructions.

Athletes that are unable to allocate an agent should fill a form in the Sport Information Desk so that a Technical Official or volunteer will be allocated to act as an agent.

SAME DISCIPLINE ATHLETES (SDA)

Accredited seating for athletes and team officials will be in the west stand.

Athletes wishing to have access to seats reserved for athletes of the same sport must follow the instructions of Paris 2024 staff. There are 112 places available per session (including 24 places for wheelchair users and 24 places for accompanying persons).

POST-COMPETITION PROCEDURES

LEAVING THE FIELD OF PLAY

On 29 August 2024, athletes shooting in the morning session are requested to leave the Ranking Round Field of Play via the mixed zone as soon as their equipment is





packed after completing the Ranking Round. This will allow Paris 2024 competition management to prepare for the next sessions.

During the elimination or final rounds, athletes and team officials should leave the Final Field of Play immediately on the Line Judge's directions once the scores of the match have been confirmed by the Target Judge. From here, the athlete(s) will be guided to the mixed zone.

MIXED ZONE

The mixed zone at the Training and Ranking Round Field is located behind the athletes' tents. The mixed zones at the Final Field of Play are located near the shooting platform exit.



PARIS 2024



2 3 4

**COMPETITION
VENUE**

INVALIDES (INV)

Esplanade des Invalides

75007 Paris

France

At the heart of Paris, alongside the Grand Palais, the Eiffel Tower Stadium and Champ de Mars Arena, the Invalides venue will be abuzz with the world's most prestigious sporting event and will provide a unique stage for the Olympic and Paralympic competitions over the summer.

The Invalides venue is located 18 kilometers from the Paralympic Village and has a gross capacity of around eight thousand (8,000) spectators.

The Esplanade des Invalides will also be the finish line for the Paralympic Marathon during the Paralympic Games. The venue will also be the stage for Archery events and the start line for time trial event in the road cycling competition and the finish line for the women's and men's marathons and the Marathon pour Tous, during the Olympic Games.

VENUE MAP

See appendices P88.

FIELD OF PLAY

The Field of Play for the Ranking Rounds will contain 32 targets used during competition: one (1) target for two (2) athletes. For the elimination and final rounds, the Field of Play will contain two (2) targets.

Targets and all other equipment will be presented in accordance with the World Archery Constitution and Rules.

VENUE ACCESS

Athletes arriving from the Paralympic Village will be dropped off at the bus drop-off area to the southwest of the venue. The buses will enter directly into the venue's security perimeter, this means that athletes do not have to go through another security check.



TRANSPORT ACCESS TO THE VENUE

Travel time and distance from the Paralympic Village using Paris 2024 transport services are 35 minutes and 18 kilometers.

Please note that if NPCs decide to travel to the venue by their own means, they must pass through the Pedestrian Screening Area (PSA) checkpoint before being able to enter the venue. Teams will not be able to enter the venue on bicycles or park their bicycles inside the venue's parking areas.

Athletes and team officials may use the TA transport system between the Paralympic Village and the competition site. Drop-off at the competition site will take place within the security perimeter. Full details of the athlete transport systems and timetables can be found in the NPC Transport Guide. Details and timetables for the TA system and other modes of transport will also be available from the Sport Information Centre, the NPC Desk and the Sports Information Desk (SID) on the venue.

VENUE FACILITIES AND SERVICES

→ WARM-UP AREA

The warm-up area for the elimination rounds will be located on the west side of the Ranking Round Field and will contain six (6) targets. The remaining part of the field will be used for training.

→ ATHLETES' LOUNGE

The Athletes' Lounge is located to the west of the final Field of Play close to the International Federation offices and lounge. It will be open in the morning from the arrival of the first athletes' bus on site until the departure of the last bus. The lounge will be equipped with armchairs, chairs, tables, a microwave, a kettle and two (2) televisions showing the competition live. The Athletes' Lounge will also be a place to eat and relax.

Refreshments such as fruits, snacks, cold drinks and tea and coffee will be available for athletes and team officials in the Athlete Lounge.

Free-of-charge wireless Internet access will be available in the lounge.

→ SPORT INFORMATION DESK (SID)

The SID is located in the Athletes' Lounge. It will be open from the arrival of the first athletes' bus on site until the departure of the last bus.

Each athlete or team official will be able to go there to obtain a copy of the recording of their match, via a QR Code download. Only one (1) copy per match per NPC will be available. The videos of each match will be available until the end of the Paralympic Games.

→ CHANGING ROOMS AND TOILETS

Separate men's and women's changing rooms are available to the south of the Athletes' Lounge.

Toilets are located opposite the changing rooms, as well as in the Training and Ranking Round Field. Toilets dedicated to athletes are in the immediate vicinity of the Final Field of Play.

→ MASSAGE ROOMS

A massage room equipped with six (6) massage tables will be available for athletes, close to the Athletes' Lounge and the Athletes' Changing Room.

→ FOOD AND BEVERAGE

Catering for athletes and team officials at the venue will be available under the following two (2) principles:

- Lunchboxes will be provided for athletes and team officials wishing to have a meal served at the venue. The meals will be delivered to the Athletes' Lounge where teams can collect them from the volunteers who will be responsible for distribution.
- As an exception to the above meals, on medal match days a hot meal will be served in the Athletes' Lounge to athletes and team officials (two (2) team officials per athlete) who are competing in the matches the morning and the afternoon, or if they are qualified directly for the afternoon matches. These meals do not have to be ordered in advance.

Athletes and team officials may bring food to the Invalides venue, however, please note there is no refrigeration available.

→ EQUIPMENT REPAIR SERVICES

From 22 August to 5 September, the equipment repair station will be open 30 minutes before the first practice/warm-up and will close



30 minutes after the end of practice/warm-up. The repair station will be staffed by technicians and offer repair and replacement and archery equipment tuning services for athletes.

→ **WHEELCHAIR AND PROSTHESES REPAIR STATION**

Wheelchair and prostheses repair station in Invalides will offer a range of services tailored to the mobility equipment used by athletes competing at the venue.

The repair station will be located next to the 5m training area and will be operational on the 27 August 2024, and from 29 August to 5 September 2024. Information about opening times will be available in the Sport Information Desk, in the Athletes' Lounge. More complex repairs will be referred to the main repair facility in the Paralympic Village.

→ **MEDICAL SERVICES**

The athletes' medical station will be located to the west of the site, close to the Athletes' Lounge.

The medical station will provide services such as first aid, emergency care, sports medicine and physical therapy services to athletes and team officials. The Paris 2024 athlete medical team will consist of at least one (1) doctor and one (1) physiotherapist.

→ **DOPING CONTROL STATION**

The doping control station on Invalides venue is located close to the athletes' medical station.

→ **MIXED ZONE**

The Invalides venue comprises three (3) mixed zones:

- A mixed zone behind the team shelters on the Ranking Round and Training Field of Play.
- A mixed zone on the Final Field of Play at the athletes' exit, to the right of the shooting platform with view of the FOP, for OBS and main broadcasters.
- A mixed zone at the exit of the Final Field of Play, for the other broadcasters and press.

→ **ATHLETES' EQUIPMENT STORAGE**

The competition venue's secure storage facility is located near the Athletes' Lounge. It will be available from the first day of practice on 22 August 2024 until the end of

the archery competition on 5 September 2024, by which time all equipment must have been retrieved.

A code lock will be given to each athlete to secure access to their storage locker. This lock can be collected from the sports information office (SID).

Further information on the storage will be distributed at the venue SID.

→ TOWELS

Towels will be provided to athletes; they will be available in the Athletes' changing room. The quantities will be based on one (1) towel per day per athlete.

→ WI-FI

An internet connection via the Wi-Fi network will be available for all accredited persons. A valid accreditation is required to use this Wi-Fi network during the Games. Wi-Fi authentication will be based on the accreditation number (located above the QR code on the accreditation). This wireless Internet access will be free of charge and available in all spaces.

VENUE ACCREDITATION OFFICE (VAHO)

SERVICES

OIAC/PIAC Distribution	No
------------------------	----





Pre-Valid Card validation (PVC)	Yes*
Lost/Stolen/Damaged OIAC/PIAC Replacement	Yes
Training Access Pass Distribution	No
Help Desk	No
Production and distribution of IF Guest Passes	Yes
Photos	Yes

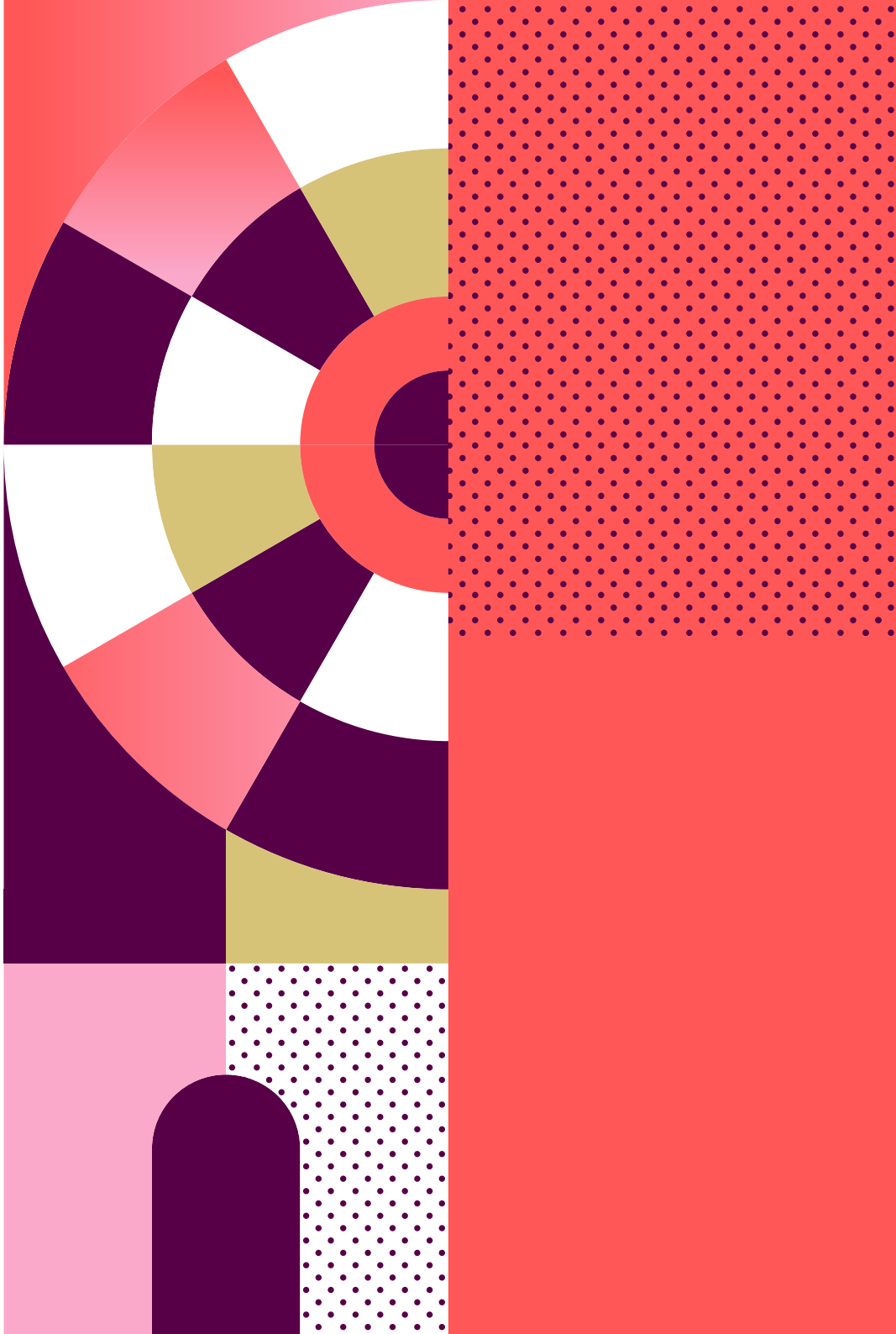
DATES AND OPENING TIMES DURING THE PARALYMPIC GAMES

Non-competition days	08:00 – 17:00
Training days	From 1.5 hours before the start of training until 30 minutes after the arrival of the last athletes' bus.
Familiarisation & Official Practice Days	From 2 hours before training starts and up to 30 minutes after arrival of the last bus.
Competition days	From three and a half hours before the start of the competition until 30 minutes after the arrival of the last athletes' bus.

*PVC validation will be possible but is not the preferred option, as there will be no dedicated line at the VAO (risk of long queues).



PARIS 2024



3 4 5

TRAINING

TRAINING VENUE

Para archery training will take place at the Invalides competition venue from Thursday 22 August to Thursday 5 September 2024. The training facilities will be located on the same field as the Ranking Round, to the north of the Final Field of Play.

Para archery training facilities will comprise 32 targets, except on the familiarisation and competition days when six (6) of the targets will be used for warm-up.

TRAINING SESSIONS

Training will be available from 9:00 to 18:00 from 22 August to 5 September (except on 28 August when training ends at 12:00).

There will be no training on the day of the Official Practice on 27 August, on the day of the Ranking Rounds on 29 August and on the afternoon of the Opening Ceremony on 28 August.

TRAINING REGULATIONS

Training session will be open to the media during the training field opening hours.

Video recording will be permitted at training sessions. However, video recording of any other teams will not be permitted at training sessions without their express permission. No specific video camera positions or facilities will be provided at the training field.

Equipment for athlete training will be identical to that used during the different competition phases. Team Managers will not need to book training sessions. A procedure for reserving training slots may be introduced in the event of many participants.



TRAINING INSTALLATIONS

TRAINING VENUES LEVEL OF SERVICE

Service levels during training will be identical to those provided during competition. With regard to catering, archers competing in the morning and afternoon sessions will have access to hot meals served in the athletes' lounge.

Other archers training or competing in one of the two (2) sessions will have lunch boxes available or will have to return to the Paralympic Village to eat.

OTHER FACILITIES AND SERVICES AVAILABLE

The archery training facilities at the Invalides archery field will include:

- 32 targets set out proportionally at 50 metres or 70 metres, including six (6) warm-up targets set out according to the competition in progress
- Six (6) targets at 5-metre practice field

The rest of the facilities and services available for the competition will also be available for training.



PARIS 2024



W 5 O

**GENERAL
INFORMATION**

THE PARALYMPIC GAMES: ESSENTIALS

PARIS AND FRANCE IN 2024

France is the world's top tourism destination with some 89 million visitors who flock here every year. Paris is a city unlike any other. It is overflowing with culture, history, and beauty. And whilst people travel to Paris to see the Louvre, the Eiffel Tower, or Notre-Dame, the real magic is found in the streets. Paris is a city with a strong cultural identity, however it also houses people from all over the world who add their own culture and customs into the mix.

As you explore the streets of Paris, you might find yourself walking the hills of Montmartre in search of that perfect crêpe or meandering through Belleville, a Chinese neighbourhood with hip, young Parisians and elaborate street art. Across the river Seine, you might find yourself enjoying a “verre de vin” at a café in Saint-Germain-des-Prés or exploring the winding streets of the Latin Quarter.

France is also one of Europe's most diverse, gastronomic, and interesting countries to explore. Romantic hill towns and castles, meandering river valleys, and oceans of vineyards carpet this country's landscape.

France remains at the forefront of technology, architecture, fashion, and cuisine. A fascinating blend of natural and man-made beauty, France offers châteaux, never-ending coastlines, medieval cathedrals, Europe's highest mountain ranges, and museums showcasing cultural icons of the Western world.





THE 2024 PARALYMPIC GAMES IN BRIEF

22

Sports

12



Days of competition

23

Disciplines

267

Sessions

549

Medal events



4,400

Athletes



20



Competition venues

ACCREDITATION

PARALYMPIC IDENTITY AND ACCREDITATION CARD (PIAC)

The Paralympic Identity and Accreditation Card (PIAC) is the official Paris 2024 Paralympic Games document that establishes the identity of its holder and their entitlements. In addition, the PIAC will provide accredited individuals with access to Olympic venues and other services during the Paris 2024 Paralympic Games, according to their role.

To ensure the safety and security of all Games participants, they must pass a background check in order to receive a PIAC. The background check will be carried out by the relevant French Government agencies.

Unlike previous editions of the Paralympic Games, the PIAC/PVC does not act as a visa waiver. For accredited participants who need a short-stay visa to enter the Schengen Area, Paris 2024 submits a visa request as part of the accreditation process. The final visa will be printed on the PVC and not on the participant's passport.

→ PRE-VALID CARD VALIDATION



The PIAC will grant access to Paris 2024 venues only once it has been validated after completion of the NPC's F-DRM. Validation must be completed in-person at a validation counter in any Paris 2024 accreditation facility.

Individuals arriving in France on international flights at Paris-Charles de Gaulle and Paris-Orly airports will be able to validate their PVC at the airport from 18 August 2024, provided that their NPC's F-DRM has been completed. Individuals arriving via other ports of entry will have to go to the appropriate accreditation centre to finalise the procedure for validating their accreditation. Each participant will need to visit an accreditation facility in person to finalise the validation procedure. Individuals will need to bring their PVC

and the valid ID provided to Paris 2024 during the accreditation application process.



ACCREDITATION CATEGORIES AND PRIVILEGES

All Games participants are provided with access only to the venues and zones that are required for them to complete the duties associated with their roles. The table below outlines the level of access granted to each category of participant.

→ CATEGORIES AND PRIVILEGE

CATEGORY	POPULATION	VENUE ACCESS	ZONE ACCESS	SEATING	TRANSPORT	VILLAGE
Aa	Athlete	Own discipline venue(s), PLV, MPC, IBC	2, R, BLUE	A Stand (at own discipline venues [1])	T-A	Yes
Ap	Alternate athlete	Own discipline venue(s), PLV	2, R, BLUE	No seating access Ticket necessary	T-A	No [2]
Ao	Coach, Medical personnel, Doctor, Physiotherapist, Technical personnel, Administrative personnel	Own sport venues or all venues where athletes participate, PLV	2, R, BLUE	A Stand (at own discipline venues [1])	T-A	PTO: Yes ATO: No [2]
Ao	NOC welfare officer	All venues in which the NOC has competing athletes, PLV	2, R, BLUE	A Stand	T-A	No [2]
Ao	Press attaché	Own discipline venue(s) or all venues where athletes participate, PLV, MPC, IBC	2, 4, R, BLUE MZ (athletes' side of the Press Mixed Zone)	A Stand (at own discipline venues or all venues where athletes participate)	T-A	PTO: Yes
Ao	Veterinarian	Equestrian venues only, PLV	2, R, BLUE	A Stand	T-A	Yes

CATEGORY	POPULATION	VENUE ACCESS	ZONE ACCESS	SEATING	TRANSPORT	VILLAGE
Ao	Groom	Equestrian venues only, PLV	2, R, BLUE	A Stand	T-A	No [2]
P	Training partner	Own training venue(s) only	2, White [3], [4], [5]	–	T-P	No
P	Personal Coaches/ Support Personnel	Own training venue(s) only Access may be given to warm-up facilities in competition venues when possible	2, White [3], [4], [5]	–	T-P	No
NOC	Athlete chaperone	Athlete's discipline venue(s), PLV	2, R, White	A Stand	T-A	No [2]

- [1] Free ticket necessary for athletes' stand at other venues – please contact NPC Services for more information on procedures for obtaining tickets for different discipline spectating athletes (DDA).
- [2] NPCs can purchase the dining privileges (knife & fork symbol) to be added to the accreditation until the F-DRM.
- [3] For P accredited access, see conditions below.
- [4] For some sports where the venue is both a training and competition venue, P accredited will also have access to the competition venue(s) (see the “Competition” section in the guide).
- [5] P accredited for a specific list of sports will be allowed to obtain a Blue upgrade or SACD to access the FOP or specific areas.



→ ACCREDITATION PRIVILEGE CODES

The Accreditation Card Operating System assigns access privileges according to a privilege matrix that includes any function performing an official role at the Games. The privileges are based on accreditation zones and are printed on the PIAC along with the individual's personal information, function and responsible organisation. At sport venues the privileges give access to accreditation zones as described below:

ZONES	
WHITE	General circulation areas
RED	Operational areas, General circulation areas
BLUE	Field of play, Operational areas, General circulation areas
2	Athlete preparation areas
4	Press areas
5	Broadcast areas
R	Residential zone of the Paralympic Village
MZ	Athletes' side of the Mixed Zone

SEATING	
A	Athletes' stand

TRANSPORT	
TA	Athletes/NOCs transport system
TP	Public transport systems

SPORTS / VENUES

CODE [1]	Competition venue(s) and training venue(s) for each discipline – white letters with black background
CODE [1]	Training venue(s) at any time and/or competition venue(s) on training days only – white letters with green background

[1] The code is represented by the three-letter acronym of the venue in question, or by ALL for access to all sites.

ACCREDITATION VALIDATION COUNTERS

VENUE	POPULATION	DATES 2024	VALIDATION	PRODUCTION	ISSUE RESOLUTION	HELP DESK
Airports CDG-Orly	Paralympic Family	21 August (Full operation)	Yes	No	No	No
TPC Village	Athletes & team officials	21 August – 10 September (from pre-opening)	Yes	Yes	Yes	Yes
MPC* Le Pulse	Press & Photographers	N/A	No	No	No	No
OFH Hyatt Regency Etoile	IPC, dignitaries	According to lockdown	Yes	No	Yes	No
IBC	Right Holding Broadcasters	21 August – 8 September (from soft opening)	Yes	Yes	Yes	Yes
VAHOvenue Accreditation Help Office	All accredited populations	According to lockdown	Yes	No	Yes	No
VAHO+ Outside Île-de-France	All accredited populations	According to lockdown	Yes	Yes	Yes	Yes (limited)
UAC Uniform and Accreditation Centre	All accredited populations	May 2024	Yes	Yes	Yes	Yes

*There will be no Accreditation Centre or counter at the MPC for the Paralympics at Pulse HQ. Media will need to pick up their accreditation at the UAC (Uniform and





Accreditation Centre). If they experience issues with their accreditation, the closest VAHO from the MPC will be at le Stade de France.

LOST, STOLEN, DAMAGED ACCREDITATION CARDS

Lost and stolen accreditation cards should be reported immediately to the nearest accreditation centre or Venue Accreditation Help Office (VAHO). Participants will be required to complete a Lost/Stolen Accreditation Card form and present a valid form of identification.

Accreditation cards which are damaged in such a way that the photograph and/or the personal information is not legible or that the access control system is not able to read the card, should also be returned for replacement at any accreditation facility that provides accreditation card printing.

Please note that PVCs or PIACs cannot be reissued after the end of the operational period of Paris 2024 accreditation facilities.

ACCESS TO TRAINING VENUES “P” ACCREDITATION

Training venues will be accessible only to holders of a valid accreditation. NPCs will be granted access to one or more training venues, according to the sport code(s) printed on their accreditation.

Specific passes for training venues will no longer exist for the Paris 2024 Games, but the requirements are integrated into “P” accreditation quotas.

The Paralympic Village has eight training venues within its security perimeter for six sports (goalball, Para powerlifting, Para taekwondo, sitting volleyball, wheelchair basketball and wheelchair fencing). Seven of these venues are located in the existing cinema studios next to the Main Dining Hall and are accessible from the Village Plaza. The other training venue, Gymnase Aimé Lallement, is in the Village logistics zone, next to the Workforce Entry.

For access to training venues within the Paralympic Village, “P” accredited persons for the relevant sports will be given an additional dedicated access code (not PLV) allowing them access to the training venues in the Paralympic Village, only on the training day and according to the training schedule. It will not be possible to access the Residential Zone from the Village Training Venues without “R” on the PIAC.

The maximum quota for “P” accredited personnel per venue per NPC, who are allowed access at any given time, is indicated in the Training section.

SUPPLEMENTARY ACCESS CONTROL DEVICES (SACDS)

A Supplementary Access Control Device (SACD) may be required to access specific areas of competition venues in line with sport-specific regulations. Specific areas within a venue, despite being within an accredited zone, can have additional restrictions and the PIAC itself may not grant access to these areas (e.g. the field of play, doping control stations). The SACD could take different forms such as an armband or an additional pass to be attached to the same lanyard as the PIAC.

The SACDs for each sport are detailed within the sport specific section of each Team Leaders' Guide.

ANTI-DOPING

ANTI-DOPING PROGRAMME

The anti-doping programme for the Paralympic Games is delivered by Paris 2024 under the responsibility and oversight of the International Paralympic Committee (IPC).

The programme is conducted in accordance with the IPC Anti-Doping rules, and the World Anti-Doping Code, Standards and Prohibited List. Regulations also cover athlete whereabouts and Therapeutic Use Exemptions (TUEs).

GAMES TIME OPERATIONS

Doping control will be conducted at competition venues, training sites, athlete accommodation or any other location.

After completing doping control at Paris 2024 venues, athletes and their representative will be able to use the usual transport services (TA) to return to their respective Village. Outside of TA service operating hours, Paris 2024 will ensure that a transport solution is available for their return.



As doping control may take place at any time during the period of the Paralympic Games, all athletes competing must provide complete whereabouts information.

The quantity and timing of tests, their nature and the identity of athletes selected for doping control are defined in accordance with the Test Distribution Plan developed by the IPC.

More information on the Paralympic Games anti-doping programme is available in the Chef de Mission Guide and can be found in the “Publications” section of IPC Exchange (please contact your NPC if you do not have access to this).

→ TRANSPORTATION AFTER COMPLETING DOPING CONTROL ON THE DAY OF THE CLOSING CEREMONY

Doping control will also be conducted on the day of the Closing Ceremony. All athletes subject to doping control must complete their test at their competition venue before travelling to the Closing Ceremony. After completing doping control, Paris 2024 will transport athletes to the Paralympic Village. Athletes participating in the Closing Ceremony are requested to take a bus to the Paralympic Stadium from the Paralympic Village. Therefore, Paris 2024 recommends that all athletes who are competing on the day of the Closing Ceremony take with them to their competition venue all necessary items that may be required during the Closing Ceremony (such as their uniforms) as they may not have time to return first to their accommodation in the Paralympic Village prior to going to the ceremony.

ARRIVALS AND DEPARTURES

Paris 2024 will use several airports and train stations to welcome NPC delegations to the Paralympic Games. The period of full arrival and departure operations will be effective from 18 August to 10 September 2024.

The types of Port of Entry (POE) mentioned below are used by Paris 2024 to serve the official accommodation of the 2024 Paralympic Games.

PRIMARY PORTS OF ENTRY (PPOE).

Paris-Charles de Gaulle (CDG) and Paris-Orly (ORY) international airports will be the Primary Ports of Entry (PPOE) – Paralympic Gateway – and will offer full arrival and departure services from 18 August – 11 September 2024. Services will be available in all terminals at the PPOE.

SECONDARY PORTS OF ENTRY (SPOE)

Secondary Ports of Entry (SPOE) will have limited services in accordance with the information provided by NPCs in the ADS, and the competition schedules. See the services table in section 7.4 for details.

- Gare de Lyon (train station), Paris
- Gare du Nord (train station), Paris

ARRIVALS & DEPARTURES SERVICE POINTS (AND SP)

Arrivals & Departures Service Points (AND SPs) will have limited and on-demand services according to the information provided by NPCs on the ADS. AND SPs in Châteauroux will be activated according to the competition schedule and will offer the same level of services for NPCs.

The following AND SPS will be available during the Paralympic Games:

- Gare de l'Est (train station), Paris
- Gare d'Austerlitz (train station), Paris
- Gare de Charles de Gaulle 2 TGV (train station), Paris
- Le Bourget Airport (LBG), Paris (private flights)
- Pontoise Cormeilles Airport (POX), Paris (private flights)
- Toussus-le-Noble Airport (TNF), Paris (private flights)
- Gare de Châteauroux (train station), Châteauroux

ACTIVATION PERIOD

CITIES	ACTIVATION PERIOD
Paris	18 August – 11 September 2024
Châteauroux	18 August – 8 September 2024



ARRIVALS & DEPARTURES SERVICE

<p>Primary port of entry</p>	<ul style="list-style-type: none"> → Welcome and information desk at the exit of the baggage claim area → Accreditation validation desk → Accessibility support (airport service) → Transport service (based on ADS information and transport privilege) → Logistic trucks and handlers support (following the Transport Athlete) → TA coaches and logistics trucks for athletes and officials → Destination: Paralympic Village, and incentive hotels → Facilitation at immigration control → Administrative assistance in the event of lost or delayed luggage/ sports equipment (communication with airlines and their sub-contractors)
<p>Secondary port of entry</p>	<ul style="list-style-type: none"> → Welcome and information desk at the exit of the baggage claim area, and in train station halls → Accessibility support (airport and SNCF services) → Transport service (based on ADS information and transport privileges) → TA coaches to official destinations → Logistic trucks and handlers support (following the Transport Athlete) → Administrative assistance in the event of lost or delayed luggage/ sports equipment (communication with airlines and their subcontractors, communication with SNCF services)
<p>AND Service Points</p>	<ul style="list-style-type: none"> → Welcome and information desk at the exit of the baggage claim area (only in Nice), and in train station halls. → Accessibility support (airport and SNCF services) → Transport service (based on ADS information and transport privileges) → Logistic trucks and handlers support (following the Transport Athlete) → Administrative assistance in the event of lost or delayed luggage/ sports equipment (communication with airlines and their subcontractors, communication with SNCF services)

Accreditation validation desks will be available in all terminals at Paris-Charles de Gaulle (CDG) and Paris-Orly (ORY) to allow NPCs to validate their PVCs once the NPC's F-DRM has been completed.

Accreditation validation desks will be open from 07:00-23:00 from 18 August - 8 September 2024. Validation desks will be located in secure zones of the terminals between immigration and the baggage claim area or in the baggage claim area depending on the terminals. Only PVC validation will be possible at CDG and ORY.

→ SELF-DRIVE MOVEMENTS

NPCs organising their own transport to the Paralympic Village are also required to submit arrival information on the ADS. The following information must be provided:

1. Vehicle registration/licence plate number
2. Contact details of an NPC representative travelling in the vehicle
3. Estimated time of arrival (+/- 2 hours)

NPCs who will not use Paris 2024 services from POE will be able to access the Paris 2024 load zones at Parisian POE and the train station in Châteauroux, as follows:

- Information must be submitted on the ADS by 18 July 2024.
- Access will only be provided for buses and logistics trucks. Light vehicles should use public parking areas.
- Access will only be granted for NPCs who are not going to official destinations (Paralympic Villages, bed return hotels), with the exception of Châteauroux.
- Vehicles must arrive no earlier than 30 minutes before the arrival of the delegation at airports and 10-15 minutes before the arrival of the delegation at train stations.

Please note that priority will be given to Paris 2024 vehicles if POE load zones are congested. In this case, staff will direct NPCs to a waiting area.

NPCs organising self-drive arrivals to the Paralympic Village will first need to stop at Village Neubauer, near the Paralympic Village. If the aforementioned information is provided, a temporary VAPP will be issued which will allow the vehicle to proceed to the Paralympic Village TPC. Note that vehicles may be held at Village Neubauer for a short period of time until the TPC load zone can accommodate NPC self-drive arrivals. Please refer to the Chefs de Mission Guide for more details.



BAGGAGE AND ATHLETES' OVERSIZED SPORT EQUIPMENT

To facilitate smooth on-site operations, it is crucial that NPC representatives put luggage tags sent by P2024 on their belongings. Tags show information of NPC and clients should add a name or a sport code depending on the item.

Upon arrival at the POE, it is the responsibility of the passenger and/or baggage manager to claim their own baggage, to check that all baggage have been delivered and accounted for and to check that baggage is not damaged.

All baggage destined for the Paralympic Village and Châteauroux satellite Village will be transported either in the hold of the coaches or by the logistics trucks provided for this purpose.

Logistics staff (handlers) will be present at airports and train stations to assist delegations with the loading and unloading of baggage and athletes oversized sport equipment onto vehicles.

Logistics trucks will be available from the POE to official athlete accommodations, based on the information provided by NPCs on the ADS.

Firearms and ammunition will be transferred from the POE directly to the competition or training venues. All other athlete sports equipment will be transferred from the POE to the Paralympic Villags , the equipment will be temporarily stored at the Paralympic Village and then delivered to the competition venue by the Paris 2024 logistics team.

For the transportation of firearms and ammunition, Paris 2024 strongly recommends using Paris-Charles de Gaulle (CDG) or Paris-Orly (ORY) international airports as Ports of Entry if NPCs wish to benefit from Paris 2024 transfer services. Services will start on 20 August 2024.

Firearms and ammunition will be transported to the competition venue located in Châteauroux (300km from CDG and 260km from ORY) by Paris 2024's official freight forwarder, according to a pre-established process as well as information provided by NPCs on the ADS. In case of self-drive arrivals in Châteauroux, NPCs must first deliver their firearms and ammunition at the National Shooting Centre before going to the Paralympic Village Châteauroux.

At the airports, the delegations will be responsible for collecting their baggage and sports equipment from the baggage reclaim area and for transporting it to the loading area for the logistics vehicles.

Oversized sport equipment will be stored in one of the following locations:

- Village Residential Zone
- Competition venues for boats (Para canoe, Para rowing), firearms and ammunition
- Competition venue for bikes (Para track cycling), wheelchairs (boccia, wheelchair tennis, wheelchair rugby)
- Training venues for racing wheelchairs and throwing frames (Para athletics)
- For delegations departing between 8 and 10 September, participation in Remote-check-in is strongly recommended. This service is available for residents of the Paralympic Village. NPC delegation members who are not staying in the Paralympic Village will only be able to benefit from the remote check-in service if they have access to the Paralympic Village (accreditation or guest pass).

CEREMONIES

OPENING CEREMONY

→ CONCEPT

For the first time in the history of the Paralympic Games, the Paris 2024 Opening Ceremony will not take place inside a stadium, but in the heart of Paris. The Avenue des Champs-Élysées and Place de la Concorde will both be an extraordinary and majestic stage for the athletes representing up to 180 NPC delegations.

The venue offers magnificent views of the city and is closely linked to the history of France and Paris. Place de la Concorde is one of the most important architectural achievements of the age of enlightenment and will be a spectacular backdrop to present the image and values of the Paralympic movement to the world.





→ “PRE-PARADE” ON AVENUE DES CHAMPS-ELYSÉES AND PARADE ON PLACE DE LA CONCORDE

We aim to make the athletes’ preparation time exceptional by giving them the opportunity to experience a unique and memorable moment with the spectators. Up to 30 000 people will be along the Champs-Élysées to applaud the athletes and team officials and celebrate with them the opening of the Paralympic Games.

During this “pre-parade”, the athletes and team officials will walk down the Champs-Élysées at a slow pace, in a relaxed and festive atmosphere. The delegations will march in the protocol order validated by the IPC. This part will not be broadcasted and volunteers will be available to assist the flag bearers if needed. At the end of the “pre-parade”, the athletes and team officials will prepare for the official parade.

The broadcasted parade will start at the entrance of Place de la Concorde where the protocol and artistic sequences will also take place. After their parade, the athletes will be invited to sit and enjoy the rest of the ceremony.

Athletes and team officials who do not wish to parade will be invited to stay in the Paralympic Village and watch the Ceremony from there.

→ ATHLETE JOURNEY OVERVIEW

→ DEPARTURES FROM PARALYMPIC VILLAGE

A bus service will be provided from the Paralympic Village, located around 45 minutes from the ceremony venue. Participants staying at the Paralympic Village in Chateauroux during the Games will have to go to the Paralympic Village in Paris to take the transport plan to the Ceremony. There will be no loading zones or parking areas for NOC vehicles on the Place de la Concorde.

Participating athletes and team officials must arrive at the Paralympic Village before their assigned start time in order to board their assigned buses.

→ BUS CONFIGURATION AND ASSIGNMENT

As mentioned during the March 27 Webinar on the athletes’ journey, we are currently working on the allocation of buses for departures to the Ceremony. Due to the configuration of the buses that will be used (25 seats + 6 UFR places) and the composition of the delegations, several NOCs will share the same buses, while respecting the French protocol order as much as possible. We will make sure to have at least 2 people from the same delegation per bus, and to always have a companion from the same delegation with a person in a wheelchair.

Participants may bring their own third wheel to the Ceremony. This must be dismantled and stored in the UFR area next to the user on the way to the Ceremony site.

→ **DROP-OFF AND PREPARATION AREA**

Athletes and team officials will be dropped off near the holding area, on Avenue Churchill, Avenue des Champs-Élysées or Avenue Roosevelt. On arrival at the buffer zone, there will be two phases:

- A first gathering phase
- A second phase of preparation, during which the delegations will be called upon to prepare themselves in accordance with French protocol before starting the pre-parade.

A wide range of services will be available in the holding area, including accessible and fully accessible toilets, snacks and water, seating, shaded areas, a medical post, a dog area and more. Ponchos will also be available in case of rain.

A Toyota area and an Ottobock stand will be available in the holding area. Details of the solutions on offer can be found in the “Accessibility” section.

→ **PRE-PARADE AND PARADE**

The pre-parade will be 350 meters long and surrounded on both sides by general public zones. Services such as water, seating areas and accessible and fully accessible toilets will be available along this sequence. During the pre-parade, flag bearers will be accompanied by volunteers who can carry or help carry the delegation flag.

The parade will begin at the entrance on Place de La Concorde, marking the start of the athlete’s parade, which will be broadcast. During this sequence, the flag bearers will be invited to march proudly bearing their colors. Following the parade, participants will be invited to join their seating zones, where water will be available on request. Accessible and fully accessible toilets will be available near each seating zone.

→ **EARLY DEPARTURES**

An early departure service will be available for athletes and team officials who wish to return to the Paralympic Village after the athletes’ parade. The pick-up zones for early departures are Avenue des Champs-Élysées and Avenue Churchill.



→ **POST-CEREMONY DEPARTURES**

Once the Opening Ceremony is over, a bus service will also be available to take athletes and team officials back to the Paralympic Village. The pick-up areas will be the same as the ones used for early departures.

→ **FOOD AND BEVERAGE SERVICES**

Ceremony participants will have access to the Grab&Go points and the Dining Hall in the Paralympic Village prior to their departure for the Ceremony. Snacks and water will be provided to participants on arrival in the holding area. Water will also be distributed and available on request during the pre-parade and in the seating areas of Place de La Concorde. On their return to the Village, athletes and team officials will have access to the Dining Hall. Further details will be provided later.

→ **FLAGS AND FLAG BEARERS**

As presented at the Chefs de Mission Seminar and reiterated at the Athletes Journey Webinar, the flag-bearer policy is : 1 or 2 flag bearers per delegation. If there are two, it must be 1 man and 1 female.

Ottobock will be present in the buffer zone to adapt the flag bearers' equipment if necessary.

→ **CHATEAUROUX PARALYMPIC VILLAGE**

Participants from Chateauroux will be offered a specific transport plan to get to the Paralympic Village in Paris. On the day of the Ceremony, a 4-hour journey will be required to reach the Paris Village, where participants will be able to join their delegation and take the transport plan to the Ceremony.

Participants from Chateauroux will have the opportunity to attend the entire Opening Ceremony, if they wish, as they will be invited to spend the night at the Paris Paralympic Village on the evening of the Ceremony. Their return journey to Chateauroux is scheduled for the morning of August 29th, for all participants.

→ **RISK MANAGEMENT, SECURITY, AND MEDICAL SERVICES**

About the safety and security arrangements put in place by Paris 2024 at the Village, there will be an accreditation check for participants as they leave the Village. Buses are equipped with emergency ramps that can be installed in case of breakdown or emergency unloading. The athletes' route will be "clean to clean", as the buses will be sealed and escorted to remain in a secure zone throughout the transfer.

Finally, medical posts and rescue teams will be present on site, both in the holding area and on the Place de la Concorde, to be able to intervene if necessary.

Paris 2024 is working on an emergency plan to mitigate the risks associated with the organization of the Paralympic Games, including the Opening and Closing ceremonies.

WARNING: participants in the Opening Ceremony are not allowed to bring luggage. Participants are only allowed to carry a bag with their personal medical effects.

→ ACCESSIBILITY

Accessibility will be guaranteed along the entire route. Surfacing will be laid where it is necessary. Ramps and temporary platforms will also be provided in the athletes' drop-off and pick-up zones to facilitate access to the buses. All buses will be accessible. In the holding and preparation area, seats for athletes and team officials and shaded zones will be available.

Toyota will provide mobility assistance vehicles : 150 Yosh-E (third wheel for wheelchair users) and 40 C+ Walk S (three-wheel seated vehicle). The Toyota team will be available for the athletes in the Paralympic Village, where the installation and removal of the equipment required to use the Yosh-E will take place, and on the ceremony site, where the Toyota vehicles will be provided to the athletes. The pick-up and drop-off areas for these vehicles will be in the holding and preparation area, on the way from and to the load zones. The users will thus keep them throughout the ceremony. The allocation strategy of these vehicles is still under study. Further details will be given later.

Our partner Ottobock will also be available in the Paralympic Village to adapt the flag bearers' equipment if necessary.

During the ceremony, the Ottobock team will be in the holding and preparation area to make last-minute adjustments and repairs. A wheelchair loan service will also be provided by our partner. The loan process is still under study and further details will be given later.





We are also looking into ways of ensuring that the content of the ceremony will be accessible to all participants. A French sign language (FSL) translation and velotyping in both French and English will be displayed on the ceremony screens during the speeches and official oaths.

CLOSING CEREMONY

Like an unforgettable memory, this Paralympic Closing Ceremony will be marked by audacity, fraternity and emotion. In the heart of the Stade de France, athletes from all around the world will represent their countries/territories one last time at Paris 2024.

The Closing Ceremony will take place at Stade de France, the nation's largest stadium. Stade de France was built for the 1998 FIFA World Cup and will also host Para athletics competition during the Paralympic Games.

Further details will be provided soon.

The ceremony will start at 20:00 and finish at 23:00. Please note that timings are subject to change. Updates will be provided to NPCs later.

The Ceremony will be composed of four main elements (the elements may be alternated between protocol and artistic sequences):

- Flag bearers' parade, in protocol order
- Athletes' parade, en masse without protocol order, symbolising unity between countries
- Protocols elements: official speeches, handover ceremony, extinguishing of the flame to mark the end of the Games, etc.
- Artistic concepts: a series of artistic shows or tableaux, in which Thomas Jolly, the artistic director of the Ceremonies, will express his innovative staging approach, offering an unforgettable show.

VICTORY CEREMONIES

In principle, Victory Ceremonies will take place at the competition venue for each sport and discipline, with the exception of Victory Ceremonies for the men's and women's Para marathon that will be held in the Stade de France during the Closing Ceremony. During the ceremonies, the medal and a gift will be presented to gold, silver and bronze medallists. The flags of the countries/territories of the medallists

will be raised and the national anthem of the country/territory of the gold medallist will be played. Victory Ceremonies will be conducted in French and English.

During the Victory Ceremonies, the medallists' accreditation must be temporarily handed over to Paris 2024 staff or held out of sight. No participant should carry flags, mascots, or other personal items such as mobile phones, water bottles or cameras. Medallists must also comply with IPC Manufacturer Identification Guidelines.

Upon completion of the photo opportunity after the victory ceremony, each athlete will be required to pass through the mixed zone unless indicated by the athlete escorts and the Paris 2024 sport manager.

During the Victory Ceremony, the athletes are required to stay in line of sight of the doping control team at all times. Therefore, it is imperative that athletes do not deviate from the prescribed routes outlined in the briefing.

→ MEDALS AND DIPLOMAS

Medals and diplomas will be awarded in each event in accordance with the IPC Handbook and the IPC Protocol Guide and Technical Manual on Protocol.

- First place: a gold (silver gilt) medal, a diploma, a Paralympic medallist's pin and a medal box
- Second place: a silver medal, a diploma, a Paralympic medallist's pin and a medal box
- Third place: a bronze medal, a diploma, a Paralympic medallist's pin and a medal box
- Fourth, fifth, sixth, seventh and eighth places: a diploma

Medal boxes, medallist pins and victory diplomas (for athletes ranked first to eighth) will be distributed in the NPC Services Centre at the Paralympic Village. Paralympic Village Châteauroux information will be confirmed later.



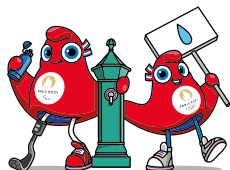
ENVIRONMENTAL RESPONSIBILITY

Paris 2024 has been committed to proposing a different model for the Games, one that is more understated and just as spectacular, and it is mobilising all its energies to achieve this. Paris 2024 is working at all levels of the organisation to reduce its environmental and climate impact. By developing and testing more responsible solutions across all aspects of the organisation, Paris 2024 also hopes to inspire and leave a legacy for more responsible sport.

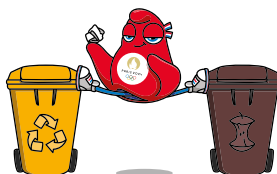
Paris 2024 is committed to halving its carbon emissions compared with the average for previous editions of the Games (London 2012, Rio 2016).

To achieve this, Paris 2024 is taking action at every level. By relying on 95% existing or temporary infrastructure, by offering twice as much plant-based food, by halving the amount of single-use plastic in catering, by finding a second-life solution for 100% of the temporary infrastructure and furniture on the Games sites, by connecting the venues to the public electricity distribution network to avoid the use of generators and by supplying the venues with 100% renewable electricity.

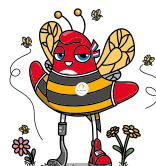
You can discover the rest of the commitments and actions for more responsible Games on our website.



USE YOUR REUSABLE BOTTLE AND THE WATER FOUNTAINS



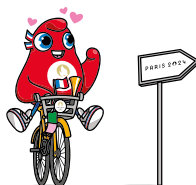
AVOID FOOD WASTE AND SORT YOUR WASTE



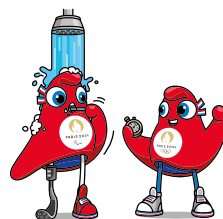
RESPECT THE VENUES AND BIODIVERSITY



EAT MORE RESPONSIBLY



TRAVEL WITH A LOW CARBON FOOTPRINT



SAVE WATER AND ENERGY RESOURCES

RECOMMENDATIONS

The success of more responsible Games is everyone's responsibility. At all the venues, you have the opportunity to act at your own level and help Paris 2024 achieve its objectives for Games that everyone can be proud of. That's why Paris 2024 encourages you to adopt a few eco-reflexes:

- Using reusable water bottles and water fountains at the Paralympic Village to reduce plastic waste.
- Using the waste sorting system to reduce the volume of waste that is sent to landfill sites.
- Promoting responsible food options and reducing food waste.
- Ensuring the responsible management of water and energy resources.
- Preserving sites and their environment, and respecting equipment to encourage their second life.

MEDICAL SERVICES

Public health services, including disease surveillance, communicable disease control, food and water quality control and air quality monitoring will be in place throughout France during the Games.

There are no vaccination requirements for entering France. However, all NPC representatives are advised to consult their local physician prior to travelling to France to ensure up-to-date vaccinations for all Vaccine-Preventable Diseases according to pre-travel advice.

A basic summary of medical services at the Games is given below. Full details will be provided in the Healthcare Guide.

PARALYMPIC VILLAGE POLYCLINIC

The three-storey Danhier Institute, which was renovated in 2021, is a podiatrist and osteopathy school of 3,262m². The institute, which is located in the south-east of the Paralympic Village, will be the Polyclinic for the Paris 2024 Paralympic Games. All the necessary medical services will be provided to athletes and NPC team officials from 18 August to 10 September 2024.



Polyclinic services will include:

- Emergency services
- Imaging, with two MRIs, X-ray, and ultrasound
- Laboratory services
- Mental health department
- Pharmacy
- Physical therapy, including cryotherapy (icing and ice bath)

Specialised consultation:

- Orthopaedics and Sports Medicine
- Cardiology
- Internal medicine
- Gynaecology
- Podiatry
- Ophthalmology
- Dentistry
- Supply of Ottobock orthopaedic products (orthotic devices & insoles)
- Therapeutic Use Exemption (TUE) office

MEDICAL SERVICES AT THE PARALYMPIC VILLAGE AND OFFICIAL COMPETITION AND TRAINING VENUES

The dates of operation of Paris 2024 medical services at competition and non-competition venues are listed below. Medical services will generally be offered during pre-determined operational hours of each venue, but some services at the Paralympic Village Polyclinic, International Broadcast Centre (IBC), and Paralympic Family Hotel (PFH) will be offered 24 hours a day.

LOCATION	DATES	TIMES	SERVICE LEVEL
Paralympic Village Polyclinic	Pre-Games 18 -20 August 2024	From 09:00-17:00	Limited

LOCATION	DATES	TIMES	SERVICE LEVEL
Paralympic Village Polyclinic	Games time 21 August - 8 September 2024	Emergency: 24 hours Information to come for other services	Full
	Post Games 9–10 September 2024	Information to follow	Limited
Official training venues	Depending on the sport and location, first-aid responders will be present or on call.	Opens at same time as first training, closes with last training	Full
Official competition venues	28 August - 8 September 2024	1 hour before competition until 1 hour after	Full

MEDICAL SERVICES AT SATELLITE OLYMPIC VILLAGES

The medical services at satellite Villages will be available as follows:

SATELLITE VILLAGE	DATES OF OPERATION	PRIMARY CARE	PHYSICAL THERAPY
Châteauroux	18 August to 7 September 2024	24 hours a day (at competition venue during the day and Village at night)	Daytime services

NPC DOCTORS

NPC team doctors must register in advance with Paris 2024 to provide medical services to members of their delegation during the Games. Registration will be free of charge and will be open until 28 June 2024.

During the Paris 2024 Paralympic Games, NPC doctors registered by Paris 2024 may:

- Practice medicine only on members of their delegation.
- Prescribe physiotherapy or possible treatments at competition venues or the Paralympic Village Polyclinic.



- Request imaging (X-ray, Ultrasound, MRI, or CT scan) or laboratory tests at the Paralympic Village Polyclinic.
- Prescribe medication. Medication will be dispensed at the Village Polyclinic pharmacy, free of charge, if they are included in the Pharmacy Guide. For medicines not available in the guide, a prescription can be requested from a Paris 2024 doctor. The cost of this will be borne by the NPC.

In cases where it is necessary for an NPC delegate to be transferred to a hospital, an NPC doctor will be able to accompany the patient (if there is enough room in the ambulance) and discuss medical care with hospital staff. The clinical responsibility, however, remains with the admitting physician and will only revert to the NPC doctor upon the patient's discharge from hospital.

MEDICAL SERVICES AT VENUES

The medical services available at competition venues have been validated by International Federations (IFs) and the IPC.

→ ATHLETE MEDICAL SERVICES

At least one dedicated athlete medical station will be available at all competition venues. Each medical station will provide medical services such as first aid, emergency care and sports medicine to athletes, team officials and technical officials.

At most venues there will be an ambulance on site for the evacuation of athletes if needed. If not directly on site, ambulances will be available nearby.

→ FIELD-OF-PLAY RESPONSE

Field-of-Play (FOP) teams will provide first aid and emergency care to athletes and team officials on the FOP should such services be required. If necessary, the patient will be taken from the FOP and transported to the athlete medical station, Paralympic Village Polyclinic, or a designated Games hospital as appropriate. The order of response on the FOP and any decision-making will differ according to the sport and the rules of the respective IF.

DESIGNATED GAMES HOSPITALS

If the necessary medical services cannot be provided at the Paralympic Village Polyclinic or at the venue medical station, the athlete or team official will be transferred to designated Games hospitals in Paris or the co-host city.

Any patient suffering from a life-threatening condition at any of the venue zones will be taken to the nearest hospital.

The following public hospital has been designated as the official hospital for athletes and NPC team officials during the Paris 2024 Paralympic Games:

GHU AP-HP Nord-Université Paris Cité
(site hospitalier Bichat – Claude Bernard)
46 rue Henri Huchard, 75018 Paris.

In Châteauroux, the designated hospital is the following:

Centre hospitalier de Châteauroux
216 avenue de Verdun
36000 Châteauroux

PARALYMPIC VILLAGES AND ACCOMMODATION

During the Paris 2024 Olympic Games, the Paralympic Villages will accommodate 4,400 athletes and team officials. The main Paralympic Village is located north of Paris and will be completed by satellite Paralympic Village in Châteauroux, as well as grooms' accommodation.

PARALYMPIC VILLAGES DATES OF OPERATION

VILLAGE	PRE-OPENING	OPENING	CLOSING
Paralympic Village	18 August at 08:00	21 August at 08:00	10 September at 18:00
Paralympic Village Châteauroux	18 August at 08:00	21 August at 08:00	7 September at 18:00
Grooms Village		30 August at 08:00	8 September at 18:00



SPORT INFORMATION CENTRE

The Sport Information Centre (SIC) will be located in the Halle Maxwell in the Paralympic Village. Each competition venue and the Paralympic Village Châteauroux will also have a Sport Information Desk (SID) where NPCs can go for venue and sport-specific information.

Venue SIDs will work closely with the Sport Information Centre (SIC) at the Paralympic Village.

A variety of services and information will be available at the SIC/SID, including:

- sport-related information, sports publications, event announcements, schedules, results, etc.
- training schedules
- transport, food and beverage services information
- weather information

A reception area and reception desks divided by groups of sports (one desk for several sports) will be available in the SIC to answer specific questions from NPC team officials.

Athletes will not be allowed to access the SIC. Only duly accredited NPC team officials will be allowed to enter the SIC.

A sewing room and Spectrum office (radio spectrum testing and tagging room) will also be available at the SIC. In the Spectrum Office, the team will examine wireless equipment to ensure that it meets the specifications outlined in the radio frequency authorisation certificate.

	LOCATION	DATES	TIME
SIC Olympic Village	Halle Maxwell	21 August to 8 September	07:00 – 21:00*
Sport information desks (SID)	Competition venues	See “Services” in the Competition venue section	

*Except on 28 August and 8 September, when the SIC will close at 17:00 for the Opening and Closing Ceremonies.

MYINFO

myInfo (formerly known as Info+) is an official sports reporting and information service platform delivered by the IOC and OBS, with development support from the organising committee. The service is designed to help with the official media coverage during the Olympic Games. Accredited NOC personnel will have access where needed and for unaccredited members of an NOC, additional access tokens can be requested through the Rate Card (subject to availability).

Please note that most of the information provided on myInfo will also be available on the Paris 2024 Games time website and application.

myInfo will be available as of 15 July 2024, and remain open until 14 August.

CONTENT	DETAILS
Background	Historical data, statistics, competition formats and rules, qualification criteria and venue descriptions
Biographies	Athlete biographies and team, coach, referee, umpire, judge and NOC profiles
Ceremonies	Details about Opening Ceremony, Closing Ceremony and medal ceremonies, including timings and participants
Games News	Flash quotes, press conference highlights, sport previews, news articles, statistic-driven reports, media communications and IOC news
Medals	Medal standings by sport, overall medal standings, and medallists by day, sport and events
Records	World and Olympic records, including current records, record holders and new/equalled records
Results	Competition results viewable by sport, date and NOC. Includes entry lists, start lists, results and additional sport-specific reports
Schedules	Competition and non-competition schedules, including press conferences, IOC activities and Cultural Olympiad

myInfo is available for users with an internet connection and login account (username and password) from all Paris 2024 venues, as well as remotely. myInfo provides the following features:



- customisation (ability for users to create their own notification overview by selecting only those sports and events of interest to them)
- news/events alerts via email
- hyperlinks to other websites, such as those of the IOC and IFs
- downloadable results books and competition reports
- copy and paste functionality

NOCs will have a free access to myInfo on available laptops at the SIC.

TECHNICAL FILMING AT VENUES

Technical filming at competition venues is treated on a sport-by-sport and venue-by-venue basis.

For those sports requiring competition footage for the IF and/or NPCs, a match copy service will be provided at the end of each session as per the individual International Federation requirements. Apart from exceptional cases where the footage derives from the video adjudication system, no USB sticks will be provided, but the video will be available for download from a dedicated online platform.

A link/QR code to access the web platform will be shared by the SPT team at the Sport Information Desk within the competition venue. The number of downloads per NPC will be strictly limited and only available for the respective sport. Download of the footage will only be available at the competition venue or in the Paralympic Village.

Three Sport Viewing Rooms are available inside the Bastille Services Centre. Each of them has a 30-person capacity.

Inside these rooms, a device will allow NPCs to use the Content+ service provided by OBS and display competition footage for analysis purposes on the TV available in each room.

TECHNOLOGY

The IPC, supported by Samsung and Paris 2024, is pleased to offer a cutting-edge Samsung smartphone to each athlete and athlete competition partner participating in the Games. All “Aa” athletes and “Ab” athlete competition partners will receive their Samsung smartphone at the Paralympic Village. These smartphones will come with a SIM card.

Athletes and athlete competition partners are encouraged to use their Samsung smartphones during the Paralympic Games, as they will be a hub for both general and useful information and communication.

TICKETING AND ACCREDITED SEATING

GAMES-TIME TICKET SALES

Before and during Games time, available tickets may only be purchased through the CTP.

COMPLIMENTARY SPORT TICKETS

→ TEAMS PROGRAMME

NPCs that qualify in team sports will have the opportunity to participate in the Teams ticketing programme for the applicable sports. The following sports are part of the programme: blind football, goalball, sitting volleyball, wheelchair basketball and wheelchair rugby. Each team will have the opportunity to purchase 30 tickets per session that they compete in (preliminary, intermediate, and final rounds).

→ SAME DISCIPLINE ATHLETES (SDA)

Athletes and officials may access the athletes' stand during competition for their own discipline(s) without a ticket, upon presentation of their Paralympic Identity and Accreditation Card (PIAC).



→ DIFFERENT DISCIPLINE ATHLETES (DDA)

To enhance the athlete experience, Paris 2024 will offer Different Discipline Athlete (DDA) tickets. The DDA ticketing programme allows athletes to attend competitions of disciplines other than their own free of charge. Châteauroux is excluded from this programme.

Paris 2024 will offer one free ticket per athlete per day for a sport or discipline in which they do not compete. DDA have access through general public flows, and no transport services will be provided. DDA ticket holders need to take public transport to competition venues.

DDA tickets must be requested directly by athletes using a special link that will be provided by Paris 2024 to the Chefs de Mission, following the pre-DRMs.

→ ATHLETES' FRIENDS & FAMILY (AFGF)

Paris 2024 will guarantee two tickets for purchase per competing athlete per session, except for Para triathlon & shooting Para sport for which one ticket for purchase per competing athlete per session is guaranteed. Para athletics – marathon & Para cycling road are the two sports excluded from the programme.

More information on the AF&F ticket programme and booking procedures is available in the Chefs de Mission Guide.

→ TICKET TOUTING

Tickets for the Paris 2024 Paralympic Games are only on sale on the official ticketing website for future spectators from all over the world. No other sales platform is authorised to sell tickets. By buying tickets or hospitality packages outside official channels, the buyer runs the risk that tickets or packages are not delivered to them, or that access to the sports venues will be denied to them by the Paris 2024 Organising Committee in accordance with the ticketing general terms and conditions. In addition, all buyers and/or sellers are informed that the unauthorised sale or resale of tickets outside of the official channels, constitutes an offense under French law, in particular, an offense sanctionable under article 313-6-2 of the French criminal code.

TRANSPORT

Paris 2024 aims to provide effective, reliable, secure and efficient transport services for athletes, team officials and members of the Paralympic Family. A summary of transport services is given below, all details are available in the NPC Transport Guide.

The transport services will consist of:

- Transport for Athletes (TA)
- Intercity travel
- Public transport (TP)
- Transport Connect (TC)

TA TRAINING AND COMPETITION SERVICES

The Transport for Athletes (TA) system will provide “bubble-to-bubble” transport services for athletes, NPC team officials (Aa, Ab, Ac, Am and Ao), and chaperones (when on duty), and their personal equipment, from 21 August until 10 September 2024 for competition and training.

The TA system comprises the following services:

- Arrivals and departures from/to Ports of Entry to/from the Paralympic Village.
- Arrivals and departures to/from Ports of Entry to/from the Paralympic Village Châteauroux.
- Transport between the Paralympic Villages and official competition and training venues.
- Opening and Closing Ceremony services.

TA services will vary depending on whether sports are individual sports or team sports. All activation dates and frequencies have been reviewed together with the International Federations (IF) and the IPC to ensure they meet the needs of each sport. Schedule information will be provided in the NPC Transport Guide.

TA vehicles will be accessible as follows:

- low-floor buses with a boarding/disembarking platform
- up to six places for wheelchair users
- handlebar for security
- for those that wish to do so, the possibility to strap their wheelchair to the floor.

TA services will also be available in Châteauroux.



→ INDIVIDUAL SPORTS

Services for individual sports will be provided for athletes and team officials according to the competition and training schedule as well as needs of the sport/discipline.

All the TA lines operating for individual sports are said to be shared, meaning that there are no dedicated buses for delegations, all athletes are moving together regardless the country of origin. Vehicles used on TA lines can be a bus, a coach, a minibus, a minivan or an accessible bus. Buses have a capacity of 50 (30 seated and 20 standing).

→ TEAM SPORTS

To ensure that all team members can travel together, dedicated coach transfers will be provided for athletes and NPC team officials. Services will be provided between the Paralympic Villages and competition/training venues. Depending on the accessibility needs of the sport and the team, Paris 2024 will provide accessible low floor buses that will be converted for the Paralympic Games.

Note that buses will not be allowed to stop anywhere en route to venues.

Services will start on the opening days of the Paralympic Villages according to the needs of teams and the relevant sport.

Team sport bus schedules will be provided by the Sport Information Centre.

The booking and change request process is the following:

- For a training transfer: updates on the existing TA line are possible when adjusting training sessions on the Training Session Booking App or at the Sport Information Centre. Please note that the bus timetables associated with the slots are not flexible. It will not be possible to adjust the Arrival & Departure Law at the venue. Changing in Training Sessions must be made before 16:00 the prior day.
- For a competition transfer: No update on the timings will be available except if there is a change in the competition schedule.

For team sports dedicated transfers: For the competition venues, they can modify the schedules of bus/ coaches in the planned time range of the coaches, with a margin of 15 minutes later from the Village, and 15 minutes earlier from the competition venue. (The time range has been defined and approved by the sport manager and the IF.)

Example: I have a coach planned for my session at 16:15 from the Village and 20:45 from the competition:

I can request a change to leave at 16:30 maximum from the Village. Teams will not be able to leave earlier than 16:15 and later than 16:30.

Same for the way back, I can request a departure at 20:30, but I cannot leave earlier than 20:30 and later than 20:45.

→ SPECTATING ATHLETES

A distinction will be made between same discipline and different discipline spectating athletes.

- Same discipline athletes will be entitled to use the TA service, except for team sports, but must give priority to competing athletes during peak times.
- Same discipline from team sports and different discipline athletes wishing to attend different discipline competitions should use TP and/or TC systems. Athletes will be able to find the most convenient route to venues by using the Paris 2024 Transport app.

PARALYMPIC ROUTE NETWORK (PRN)

The Paralympic Route Network (PRN) will consist of a network of roads linking all competition venues and main non-competition venues such as the Paralympic Village, Porte Maillot Hub (Paralympic Family Hotels 2 & 3 and Main Press Centre) as well as the International Broadcast Centre (IBC). This will ensure that athletes and officials are able to travel efficiently between the Paralympic Village, competition venues and non-competition venues.

Paralympic lanes will be a subset of the PRN, comprising lanes that can be reserved for Paris 2024 vehicles. Paralympic paths will also be a subset of the PRN, comprising shared lanes that will serve Paralympic destinations.

TRAVEL TO THE CO-HOST CITY OF CHÂTEAURoux

Transport services will be provided to athletes and team officials for travel between Paris and Châteauroux. Intercity transport services will be provided by coach. Details will be considered according to competition and training schedules. Bus ride to Châteauroux will take 4h15min.



PUBLIC TRANSPORT

All accredited stakeholders will be entitled to free-of-charge access to public transport (TP) services within the Greater Paris area, from 18 August to 11 September 2024. A physical transport card (Navigo) will be provided during the accreditation validation process for each Games stakeholder with TP privileges. Athletes and Alternate Athletes will have a digital TP card directly on their Samsung phones (distributed at the Paralympic Village) given upon arrival that will work through the Île-de-France Mobilités application. They can only request a physical TP card at any transport desk if digital TP Card is dysfunctional. At the end of the stay, stakeholders must leave the pass in a dedicated collection box at Transport Desks and Port of Entries.

The TP network in Île-de-France is not completely accessible, especially the metro and Regional Express Railway which use old trains and platforms. However, the new metro line 14 is accessible in addition to Paris buses and trams.

In the Greater Paris area, most official venues can be reached by TP or TC. In addition, metro, RER stations and bus stops are within a short walking distance of the Paralympic Village.

Approximate TP hours of operation are as follows:

- Buses from 05:45 – 00:45
- Metro from 05:30 – 01:15 (until 2:15 on Fridays and Saturdays)
- RER from 04:30 – 01:15
- Trams from 05:10 – 01:00

These hours are for information only. Full details will be available on the Paris 2024 Transport Accred app.

In Châteauroux, the competition venue can be reached by public transport, which is free-of charge for all accredited stakeholders as it is a free bus network for all users.

→ TRANSPORT CONNECT (TC)

The Transport Connect service (TC) will be dedicated to accredited stakeholders and its aim will be to complement public transport services. TC will be operational on the same dates as TP, from 18 August to 11 September 2024.

TC services will include regular shuttles and bus routes that connect transport hubs and public transit stations with venues, making it easier to reach venues than with public transport alone.

TC services will use low floor buses with a capacity of two places for wheelchair users. NPCs will have access to TC according to their accreditation entitlements.

As mentioned previously, the TC system will also be available for all spectating athletes to reach competition venues. Spectating athletes can use the Transport app to plan their route. Detailed route information to reach relevant destinations will be available later. Please note that TC drop-off and pick-up zones are located outside venue security perimeters.

VILLAGE MOBILITY

→ INTERNAL VILLAGE TRANSPORT SERVICE (IVTS)

An internal shuttle service will be proposed to the Paralympic Village residents and guest pass holders, from 20 August to 10 September 2024. Toyota APMs have a 5-seat capacity (or 4 seats + 1 wheelchair space). Shuttle stops will be fixed: they serve the main points of interest in the Village, as well as the residential centres. The shuttle will run every 2 minutes between 07:00 and 23:00 and every 10 minutes from 23:00 to 07:00.

For special events (such as peak arrivals/departures or on Opening and Closing Ceremony days) the shuttle service may be adapted to facilitate Village operations.

→ VILLAGE BIKE SERVICE

A free-of-charge 160-bike service will be available in the Paralympic Village for use within the Paralympic Village only. Bikes will be available in specific areas and will have to be picked up and dropped off in these locations. They must be parked in dedicated bike parking spaces in the Paralympic Village.

NPCs will be able to bring their own bikes to the Paralympic Village. The number allowed and the use of NPCs' own bikes will also be subject to a usage agreement, which will be made available later.

→ E-MOBILITY

All the Paralympic Village residents will have access to a micromobility station-based shared service within the Paralympic Village, from 20 August to 10 September 2024. The service will be composed of three-wheel seated scooters (C+Walk Seated) and GearUp wheelchair pullers.

All the units of both C+Walk seated and GearUp will be distributed across stations (exact positions are now being defined). The service is working with the Kinto app.



TRANSPORT DESK

A Transport desk will be available in the NPC Services Centre at the Paralympic Village, providing information on TA and other transportation systems.

Team sport bus schedules will be provided at the Transport desk in the Sport Information Centre, which is located in the same building as the NPC Services Centre (Halle Maxwell).

A transport desk will also be available at the Paralympic Village Châteauroux.

TRANSPORT APP

Paris 2024 will launch a dedicated Games-time Transport app for all accredited stakeholders. This will be different to the Île-de-France Mobilités (IDFM) transport app for public transport.

The main functionalities will include:

- Journey planner to calculate the best itineraries according to user preferences.
- Multimodal app suggesting itineraries that use both public transport services (TP) and Paris 2024 transport services (each accredited stakeholder will only see the Paris 2024 transport services that they are entitled to).
- Real-time travel information (travel time updates, next departures, and alerts).
- Booking functionalities for TX services (available according to user privileges).

Accessibility features:

- Users will be able to specify in the journey planner, through a filter button, if they wish to only display accessible transport modes (way to define accessible transport modes and stops to be studied with transit operators).
- Users will be able to specify if they need an accessible vehicle in the TX booking form.

The Transport App provider complies with accessibility standards such as WCAG 2.0, which defines guidelines and best practices regarding digital accessibility.

The app will be available to download from the Android Play Store and Apple App Store, and will be available in French, English and Spanish.

ATHLETES' BAGGAGE AND OVERSIZED SPORT EQUIPMENT

Athletes' baggage and oversized sport equipment refers to the goods accompanying athletes and NPC team officials.

Baggage loaded onto logistics vehicles will be transported from the various Ports of Entry and arrival points within the Paris region and Châteauroux to the relevant Village or the Paris 2024 hotel.

When oversized athletes sport equipment arrives on French territory, the final storage site will determine the types of transfers and movements during the Games.

Two main categories of movements have been identified for first-time arrivals:

- From Port of Entry or arrival point (airport or train station) to the Paralympic Villages.
- From Port of Entry or arrival point (airport or train station) to competition (e.g., firearms, ammunition, shooting Para sport equipment).

→ SPORT EQUIPMENT INTER-VENUE TRANSPORT

A free-of-charge inter-venue transfer service will be available during the Paralympic Games for oversized athletes sport equipment.

- Transfers will be organised from the Paralympic Village to competition and/or training venues, as well as between competition venues and training venues.
- NPCs can request any kind of inter-venue transfers at the Logistics desk in the NPC Centre (Halle Maxwell).
- Three drop-off and pick-up areas according to the sport for these athletes sport equipment have been identified at the Paralympic Village:
 - close to the Transport Mall – Dora Maar school
 - the studios
 - the island area
- Athletes or team officials will be able to drop-off and pick-up oversized athletes sport equipment at these areas and send them to or from the competition or training venue.
- NPCs will be asked to respect the time slots for the drop-off and collection of athletes sports equipment in the Athletes Sports Equipment Management Zones in the Paralympic Village in Paris.
- An equipment identification and tracking system (specific tag per venue) for each transfer will be used with information to complete.



SECURITY

In accordance with its letter of guarantee and the IPC's Host City Contract, the French State is responsible for the safety and security of the Paris 2024 Paralympic Games.

The government will coordinate all security matters as well as emergency services, whilst Paris 2024 is responsible for the design, implementation, and execution of security measures at Paris 2024 competition and non-competition venues.

Paris 2024 has partnered with national security agencies to integrate the most effective security arrangements within venues and other official sites.

SECURITY AT VENUES

→ VENUE INSPECTION AND LOCKDOWN

The Paralympic Villages, as well as the other accommodations and all competition and training venues will undergo a security inspection by specialist government departments and a lockdown period prior to the Games.

During the lockdown period, all security and safety procedures will be implemented, and access controls will be activated with the support of technology measures. However, please note that French legislation does not allow facial recognition. During this period, no person, vehicle, or equipment may enter the venues without accreditation (or other appropriate access devices) and without passing the appropriate security checks.

After the accreditation check, people wishing to access venues will be subject to a personal and property inspection. Personal and baggage inspections for people whose age, mobility or medical reasons do not allow them to undergo the generic procedure are subject to an adapted procedure that takes better account of their specific needs.

→ PARALYMPIC VILLAGES

Access to the Paralympic Village will be based on validated accreditation or other appropriate access devices. Access will be secured by Pedestrian Screening Areas (PSA) and Vehicle Screening Areas (VSA) to ensure that no prohibited items are brought in, and that each person has a valid accreditation.

The main principles of Paralympic Village security are as follows:

- A perimeter entirely enclosed by video-monitored security barriers and equipped with anti-intrusion systems.

- A security inspection conducted by specialised government services prior to opening.
- Village surveillance and access control conducted by private security companies.
- Systematic pedestrian and vehicle control measures.
- Permanent state surveillance of the area surrounding the Paralympic Villages with specialised intervention resources.

At competition venues, areas will be restricted to athletes and team officials. These areas will be secured by accreditation access control points.

→ TRAINING VENUES

After the State services have locked down the venues, access to training venues will be granted on presentation of a Paris 2024 accreditation that allows access to those venues.

A visual accreditation check will be carried out during pedestrian access, as well as a security check (bag opening, magnetometer).

Transport for Athletes (TA) services must be equipped with a Vehicle Access and/or Parking Permit (VAPP) allowing them access to venues. In addition, a seal control will be carried out at the vehicle access point. For other authorised vehicles, an additional control of accreditation of the persons in the vehicles will be carried out. Without this, access will not be granted.

SECURITY OF TRANSFER AND TRANSPORT OPERATIONS

In Île-de-France, there will be a surveillance system for Paralympic routes under the supervision of the Préfecture de Police.

A “bubble to bubble” system will operate from the Village Transport Mall to/ from training and competition venues. TA vehicles will travel from one secure area to another using Paralympic routes. Athletes and team officials will be allowed to remain inside the vehicle. The process of checking the external parts of the vehicles will be quick. However, these vehicles will have to stop at the Vehicle Screening Area (VSA) and there may be a queue for a few minutes before the inspection.





Athletes and team officials returning from training/competition venues will need to exit the TA vehicle at the Village Transport Mall and enter the Residential Zone through the Pedestrian Screening Area (PSA).

All NPC vehicles with an appropriate VAPP will go through the usual security processes at the VSA. Passengers will also be screened individually.

PROHIBITED OR RESTRICTED ITEMS POLICY

→ PROHIBITED ITEMS

These items are strictly forbidden in the Paris 2024 venues.

AT COMPETITION VENUES

- **Firearms and/or ammunition not used for Games competitions.**
- **Replica weapons:** airsoft firearms, replica weapons and/or reproductions that could cast doubt on the owner's intention.
- **Weapons "of opportunity":** selfie sticks, everyday blades (such as multi-tools, scissors, razors etc.) that can malevolently be used as a weapon to inflict harm.
- **Explosives, flammable substances, and pyrotechnic devices:** explosive devices, improvised explosive devices, gunpowder, smoke bombs, smoke, flares, fireworks, objects resembling explosive devices, ignition devices.
- **Dangerous substances, doping products, and illegal narcotics:** items likely to infringe the law regulating toxic and noxious substances, narcotics and stimulants or other illegal drugs in France, Europe, and other parts of the world, items corresponding to dangerous materials under French legislation, tear gas, pressurised containers, items corresponding to dangerous materials,
- **Alcoholic beverages.**
- **Glass containers, cans, and tins.**
- **Wireless equipment not authorised without a TAG from French spectrum agency (ANFR):** radios, microphones, broadcasting cameras, drones, satellite links, wireless 4G routers, jamming or scanning equipment, radio scanners.
- **Political, religious, vulgar messaging, or trademarks:** advertising materials, signs, banners, etc. that include a religious or political message, or are deemed contrary to public order. Ropes, carboards, posters, and other items that can be used for demonstrations in the venues,
- **Personal mobility devices, whether electric or not:** bicycles, scooters, rollerblades, skates, gyropods, hoverboards, etc.

- **Objects producing excessive noise:** megaphones, vuvuzelas, air horns.
- **Laser pointers.**

IN OLYMPIC VILLAGES

- **Firearms and/or ammunition not used for Games competitions.**
- **Replica weapons:** airsoft firearms, replica weapons and/or reproductions that could cast doubt on the owner's intention.
- **Explosives, flammable substances, and pyrotechnic devices:** explosive devices, improvised explosive devices, gunpowder, smoke bombs, smoke, flares, fireworks, objects resembling explosive devices, ignition devices.
- **Dangerous substances, doping products, and illegal narcotics:** items likely to infringe the law regulating toxic and noxious substances, narcotics and stimulants or other illegal drugs in France, Europe, and other parts of the world, items corresponding to dangerous materials under French legislation, tear gas, pressurised containers, items corresponding to dangerous materials,
- **Wireless equipment not authorised without a TAG from French spectrum agency (ANFR):** radios, microphones, broadcasting cameras, drones, satellite links, wireless 4G routers, jamming or scanning equipment, radio scanner.
- **Political, religious, vulgar messaging, or trademarks:** advertising materials, signs, banners, etc. that include a religious or political message, or are deemed contrary to public order. Ropes, carboards, posters, and other items that can be used for demonstrations in the venues,

→ RESTRICTED ITEMS

These items are authorised at venues but restricted in quantity and/or nature.

AT COMPETITION VENUES

- **Weapons of opportunity:** only walking aids are authorised,
- **Flammable substances:** only portable oxygen cylinders for medical use are allowed,
- **Containers:** plastic bottles, plastic or metallic flasks/gourd are allowed,
- **Luggage:** large sports bags and large pieces of luggage are permitted,
- **Animals:** only service dogs are allowed,
- **Flags:** only flags of countries and territories participating in the Games are allowed, without rigid flagpoles, and without size restrictions for athletes at competition venues.



IN OLYMPIC VILLAGES

- **Weapons of opportunity:** walking aids, everyday blades (such as multi-tools, scissors, razors etc.) that are allowed in planes, that can malevolently be used as a weapon to inflict harm.
- **Flammable substances:** only portable oxygen cylinders for medical use are allowed,
- **Animals:** only service dogs are allowed,
- **Sprays and aerosols:** sprays and aerosols used for daily hygiene such as deodorants are allowed,
- **Objects producing excessive noise:** personal musical instruments and music speakers are allowed,
- **Flags:** only flags of countries and territories participating in the Games are allowed, without rigid poles. No maximum size for athletes at Villages.

→ OBJECTS CONSIDERED AS “TOOLS OF THE TRADE”

Objects authorised at venues only if they are required to carry out professional activities for certain stakeholders.

AT COMPETITION VENUES

- **Weapon of opportunity:** tools such as hammers, wrenches, saws, screwdrivers, etc. needed to maintain sports equipment and personal mobility aids for people with reduced mobility, but that can malevolently be used as a weapon to inflict harm,
- **Personal mobility devices:** bicycles and other personal means of transport required for on-site competitions,
- **Sprays and aerosols:** sprays and aerosols required for sports and for the treatment of athletes,
- **Photography equipment:** camera lenses larger than 20cm are authorised.
- **Camera equipment:** all equipment used to take photos and videos to analyse athlete performance.
- **Medical equipment for the treatment of athletes.**

IN OLYMPIC VILLAGES

- **Weapon of opportunity:** tools such as hammers, wrenches, saws, screwdrivers, etc. necessary to help people settle at villages and the maintenance of sports equipment.
- **Laser pointers** to be used in meetings

→ **Medical equipment for the treatment of athletes.**

At the F-DRM, the Chefs de Mission will receive stickers to be applied on tools of trade that have been registered in advance via Paris 2024 NOC services. The Chef de Mission will be responsible to distribute the stickers to all the delegation.

Please note that for security reasons, the use of drones is strictly forbidden at all competition and non-competition venues of the Olympic Games.

EMERGENCY SERVICES

→ EMERGENCY NUMBERS OUTSIDE PARIS 2024 VENUES

- European emergency number: 112
- Emergency Medical Services (SAMU): 15
- Police: 17
- Fire brigade: 18

Paris 2024 recommends that NOCs do not programme emergency service numbers into mobile phones as speed dial functions can lead to accidental calls to the emergency services.

→ EMERGENCY NUMBERS THAT SHOULD BE USED AT PARIS 2024 VENUES

Olympic Village: +33 9 20 24 48 16



WHEELCHAIR, ORTHOTIC AND PROSTHETIC REPAIR SERVICES

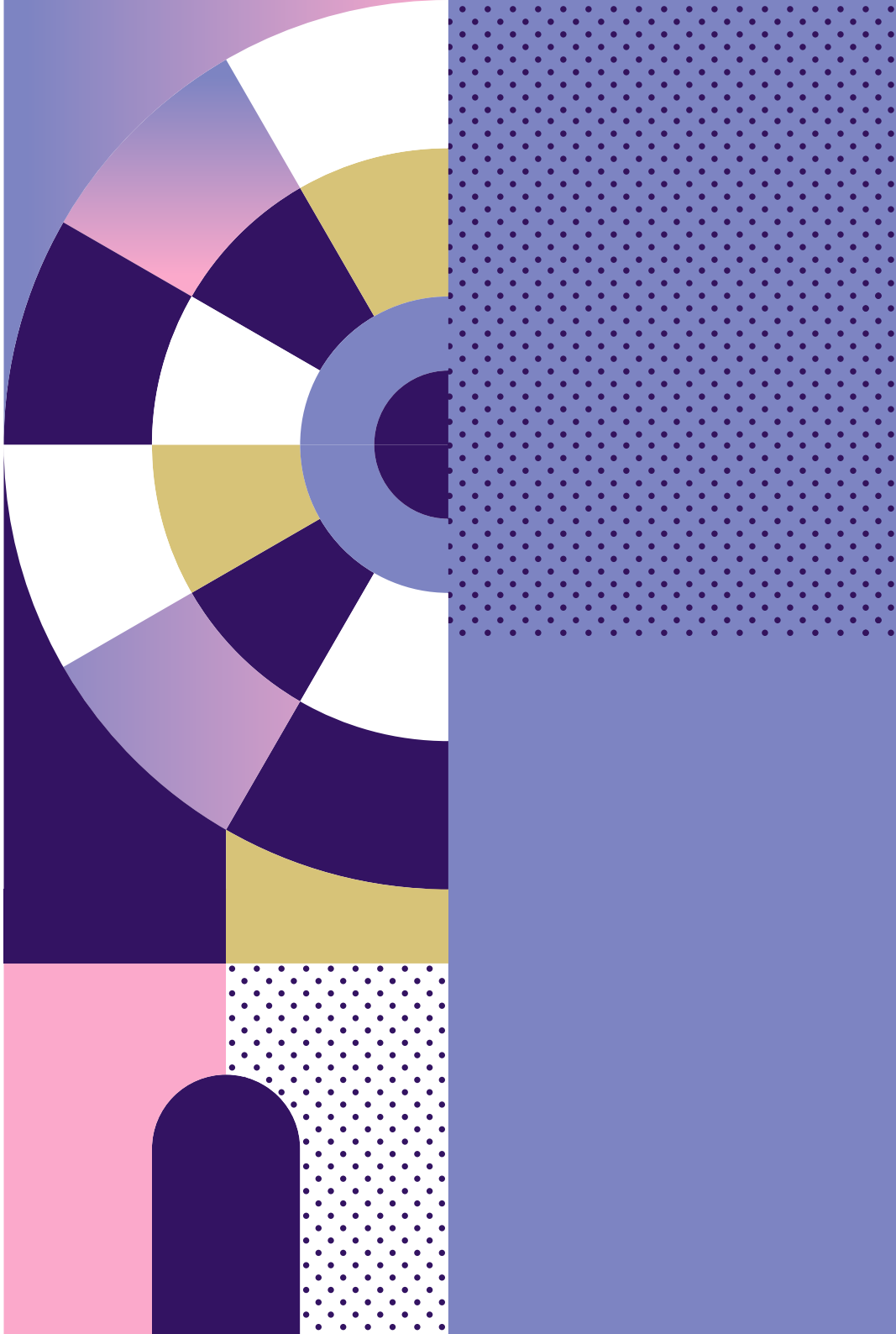
Ottobock will be the official provider for wheelchair, orthotic and prosthetic repair services for athletes, NPC team officials, IF Games officials and members of the Paralympic Family during the Games. Repairs will be offered free of charge to damaged wheelchairs, orthotics or prostheses that, if not carried out, would either prevent athletes from competing in their events, or delegates from achieving their usual level of independent daily living.

The workshop is located in the Village Plaza and will be the primary facility for wheelchair, orthotic and prosthetic repair services during the Paralympic Games. The dates and times of operation can be found below.

DATES OF OPERATION	TIMES OF OPERATION
18-20 August 2024	10:00-18:00
21 August - 10 September 2024	08:00-23:00

* On Opening and Closing Ceremony days (28 August and 8 September 2024 respectively) services will be available from 08:00-16:00.

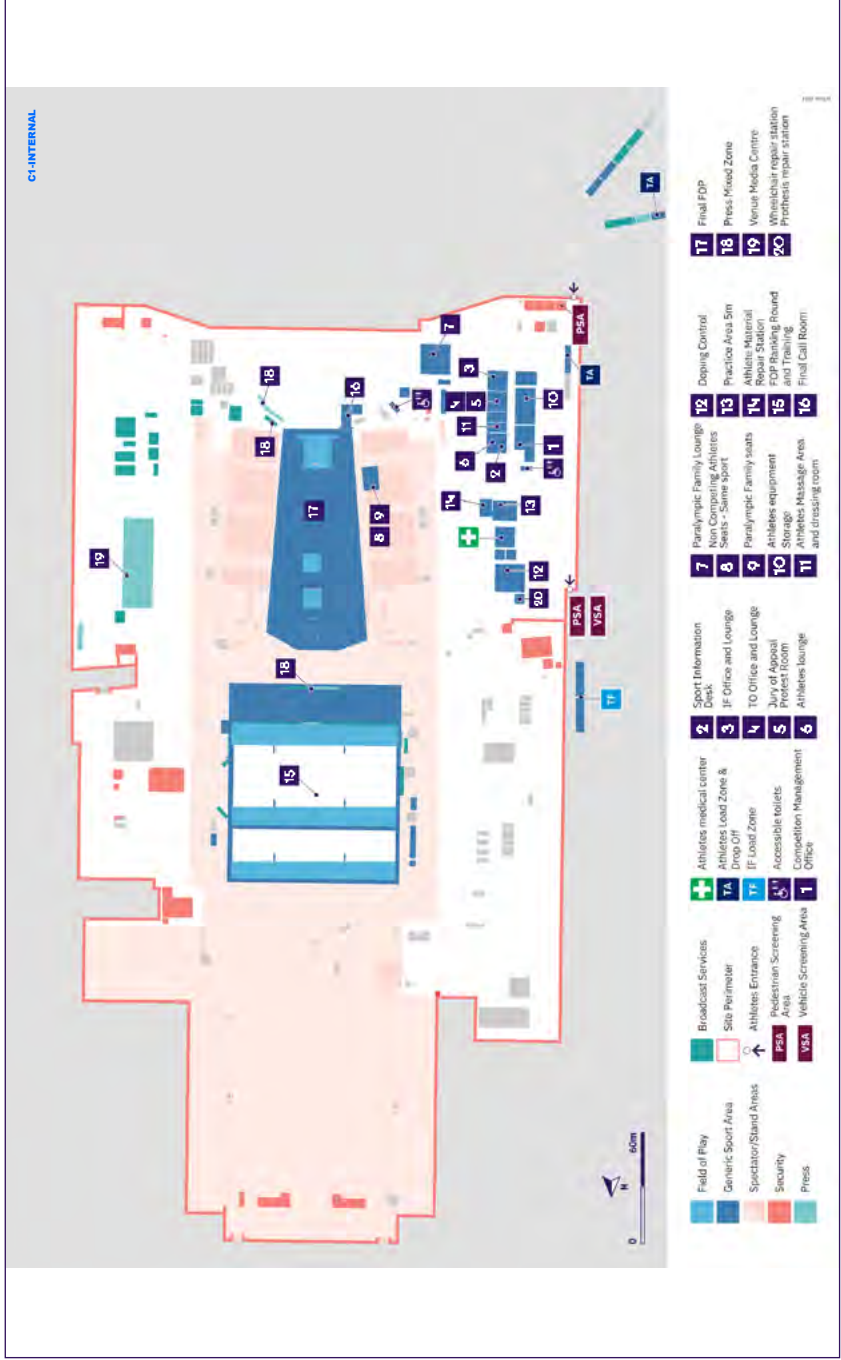
More information about these services will be communicated later.





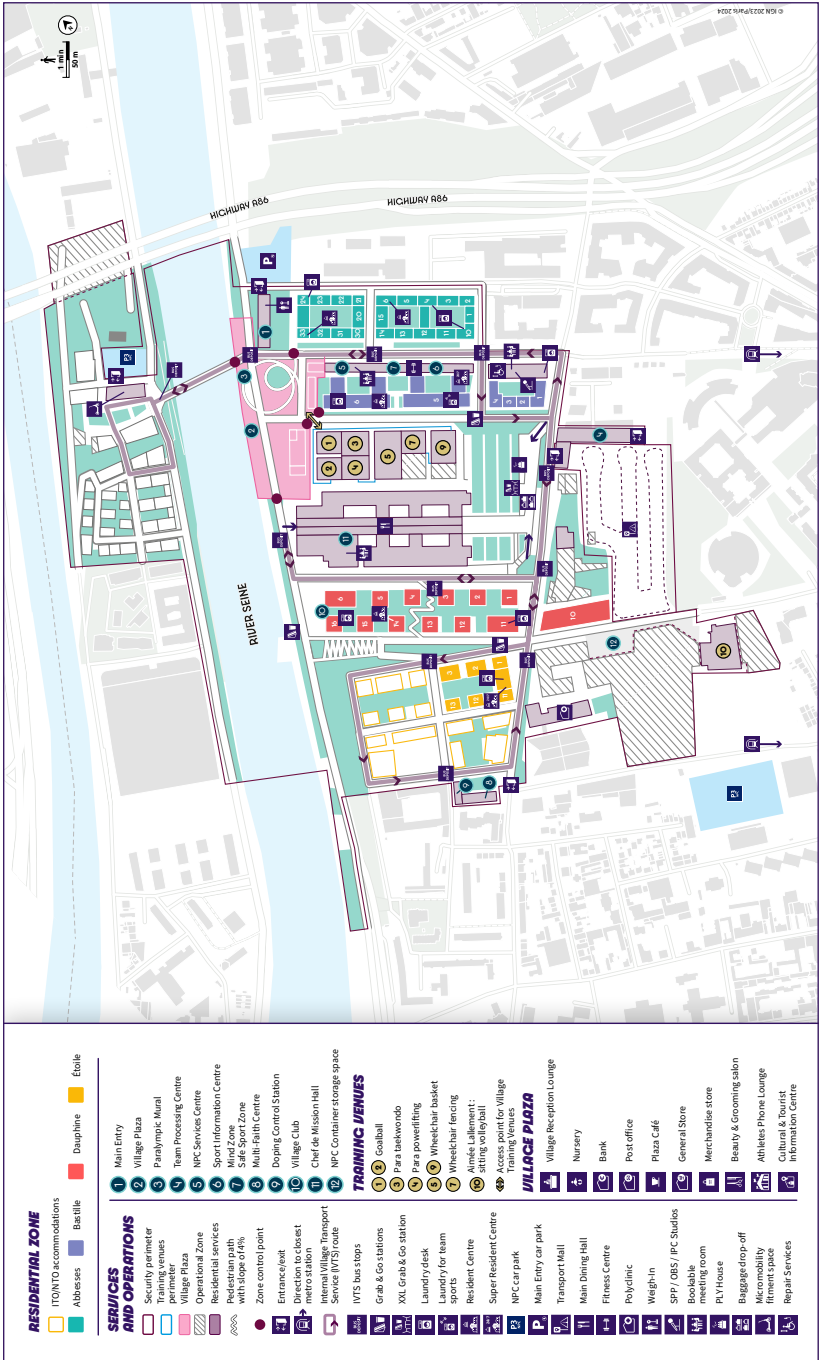
APPENDICES

VENUE MAP





PARALYMPIC VILLAGE



COMPETITION SCHEDULE

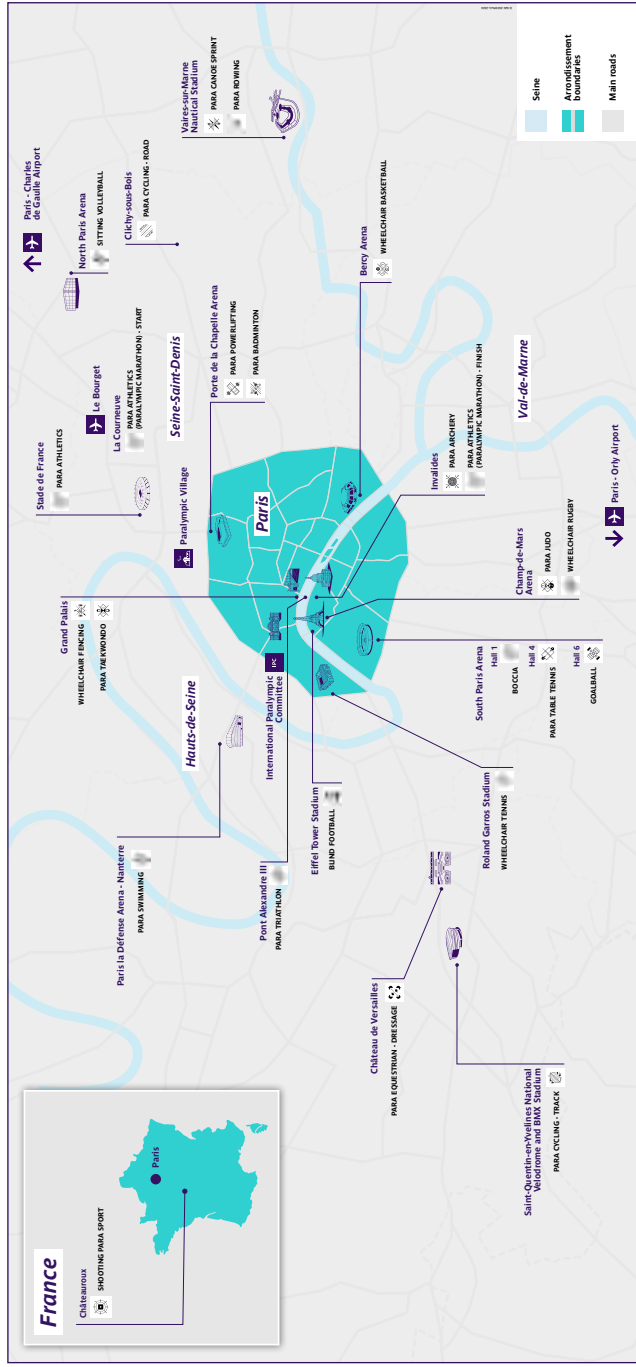
Sport	28		29		30		31		01		02		03		04		05		06		07		08	
	DO	OS	DI	OS	DI	OS	DI	OS	DI	OS	DI	OS	DI	OS	DI	OS	DI	OS	DI	OS	DI	OS	DI	OS
Cereemonies	Quais de Seine																							
Blind Football	Eliffel Tower Stadium																							
Boccia	South Paris Arena 1																							
Goalball	South Paris Arena 6																							
Para Archery	Invalides																							
Para Athletics	Stade de France La Courneuve Invalides																							
Para Badminton	Porte de la Chapelle Arena																							
Para Canoe	Uaires-sur-Marne Nautical Stadium - Flatwater																							
Para Cycling Road	Clchy-sous-Bois																							
Para Cycling Track	Saint-Quentin-en-Yvelines National Velodrome																							
Para Equestrian (Dressage)	Château de Versailles																							
Para Judo	Champ-de-Mars Arena																							
Para Powerlifting	Porte de la Chapelle Arena																							
Para Rowing	Uaires-sur-Marne Nautical Stadium - Flatwater																							
Para Swimming	Paris La Defense Arena																							
Para Table Tennis	South Paris Arena 4																							
Para Taekwondo	Grand Palais																							

Cereemonies | Medals | Qualifications



Sport	Competition venue	28 O8 D.O.	29 O8 D1	30 O8 D2	31 O8 D3	O1 O9 D4	O2 O9 D5	O3 O9 D6	O4 O9 D7	O5 O9 D8	O6 O9 D9	O7 O9 D10	O8 O9 D11
Para Triathlon	Pont Alexandre III												
Shooting Para Sport	Chateauroux Shooting Centre												
Sitting Volleyball	North Paris Arena												
Wheelchair Basketball	Bercy Arena												
Wheelchair Fencing	Grand Palais												
Wheelchair Rugby	Champ-de-Mars Arena												
Wheelchair Tennis	Roland-Garros Stadium												

PARALYMPIC COMPETITION VENUES





Paris 2024 thanks its Partners for their dedication.

Worldwide Partners



Premium Partners



Official Partners



Official Supporters

Abatable	ABEO	Air Liquide	Airweave	Aquatique Show	Arena	CRYSTAL	
Doublet Wasserman	DXC Technology	Egis	Enedis	ES Global	Eviden	Fitness Park	
Fnac Darty	Garden Gourmet	Gerflor	Groupe RATP	Highfield	Hype	INDIGO	
La Poste	Loxam	Lyreco	Miko	Mondo	MTD	Myrtha Pools	OnePlan
Optic 2000	Ottobock	Randstad	Rapiscan Systems	Re-uz	RGS Events	Saint-Gobain	
Salesforce	SCC	Schneider Electric	SEDIF	SLX	SNCF	Sodexo Live!	Technogym
Terrailon	Thermo Fisher Scientific	Tourtel Twist	VINCI	Viparis	Westfield		



www.paris2024.org

[f](#) Paris2024 | [X](#) Paris2024 | [in](#) Paris 2024

[📷](#) paris2024 | [📺](#) Paris 2024 | [🎵](#) paris2024officiel